

# THE PUTMAN



Exterior A



Exterior B

3,096 - 4,556 sq. ft.

4 - 6 Bedrooms

2 - 4 Full Baths

1 Half Bath

3 - 4 Car Garage

**Lauren L.**



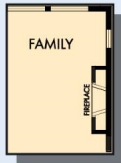
### **Home is where the heart is.**

Years we waited to buy a house. Painful years of raising children in someone else's home. Years I got to ponder what it would be like to have something of my own. I envisioned my children sitting in their home, playing in their rooms, running through their yard...and the days of waiting were over, all of my research paid off. We bought the house of my dreams and were given the best sales associate and builder, down to my warranty specialist. Everything was easy and seamless. I felt like we were working together, like a team. Now, I have a beautiful house that I know was built with integrity. I could not be more grateful.

**David Weekley  
Homes**

# THE PUTMAN

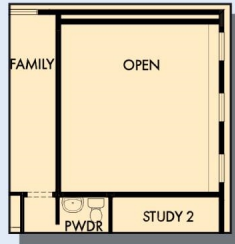
3,096 - 4,556 sq. ft. • 4 - 6 Bedrooms • 2 - 4 Full Baths • 1 Half Bath • 3 - 4 Car Garage



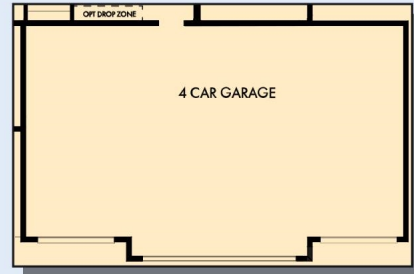
OPTIONAL WALL FIREPLACE AT FAMILY



OPTIONAL BEDROOM 5 WITH BATH3 AT STUDY 2



FIRST FLOOR WITH OPTIONAL ATHLETIC COURT



OPTIONAL 4 CAR GARAGE



FIRST FLOOR



# THE PUTMAN



OPTIONAL FREE STANDING TUB WITH SEPARATE SHOWER AT OWNER'S BATH



OPTIONAL SUPER SHOWER AT OWNER'S BATH



OPTIONAL BEDROOM 4 AT RETREAT

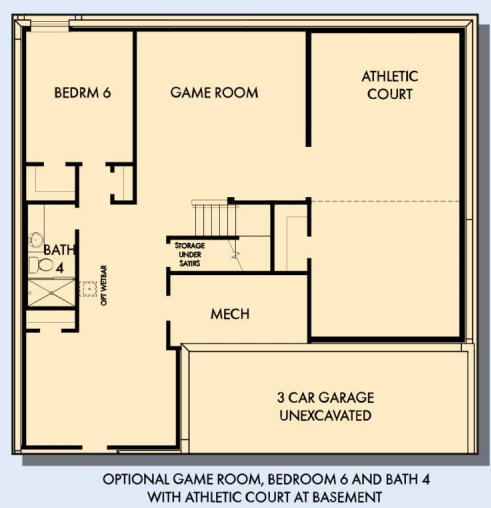
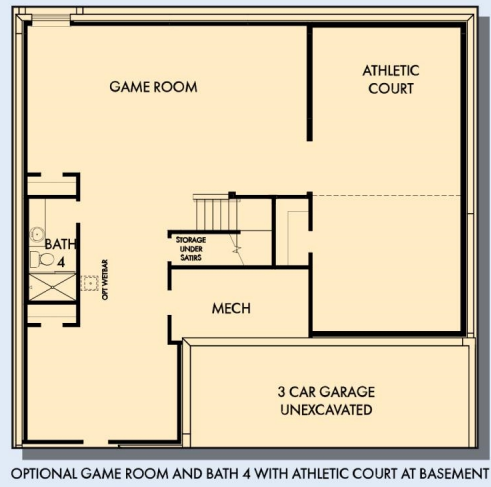
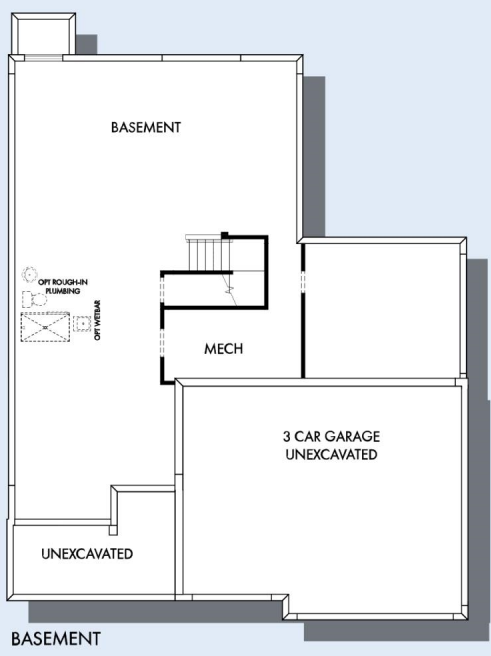


SECOND FLOOR

For additional options, please visit [DavidWeekleyHomes.com](http://DavidWeekleyHomes.com)

**DavidWeekleyHomes.com**

# THE PUTMAN



For additional options, please visit [DavidWeekleyHomes.com](http://DavidWeekleyHomes.com)

See a David Weekley Homes Sales Consultant for details. Prices, plans, dimensions, features, specifications, materials, and availability of homes or communities are subject to change without notice or obligation. Illustrations are artist's depictions only and may differ from completed improvements. Copyright © 2024 David Weekley Homes - All Rights Reserved. Minneapolis/St. Paul, MN

**DavidWeekleyHomes.com**

