

THE JULINGTON



Exterior A

2,903 sq. ft.

4 - 5 Bedrooms

3 - 4 Full Baths

0 - 1 Half Baths

4 Car Garage



Exterior B

Sandra A.



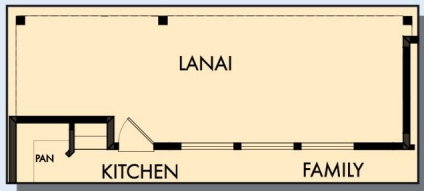
Best Builder Around

We have loved DW homes ever since our mother bought one. The quality of their work, attention to detail and willingness to respond to questions is top notch. The biggest thing we love about DW is their focus on customer service. They are not your typical builder who meets with you to get a check and forgets about you till walk thru. They are your partner through the entire process. Each step of the way they know they are building your dream house and really treat you like family. I would recommend them hands down. My husband sells real estate and has dealt with numerous builders around town. He always directs his clients to DW and signs their praises.

**David Weekley
Homes**

THE JULINGTON

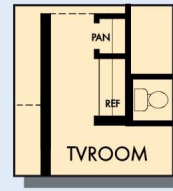
2,903 sq. ft. • 4 - 5 Bedrooms • 3 - 4 Full Baths • 0 - 1 Half Baths • 4 Car Garage



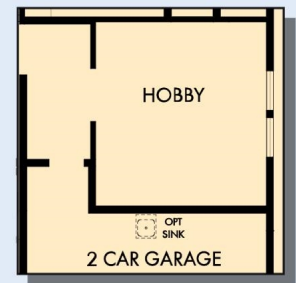
OPTIONAL EXTENDED LANAI AT FAMILY



OPTIONAL POOL BATH AT LANAI



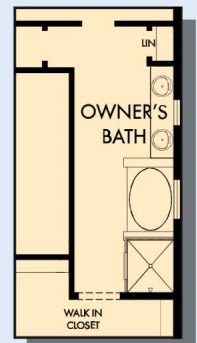
OPTIONAL BAR AT TVROOM



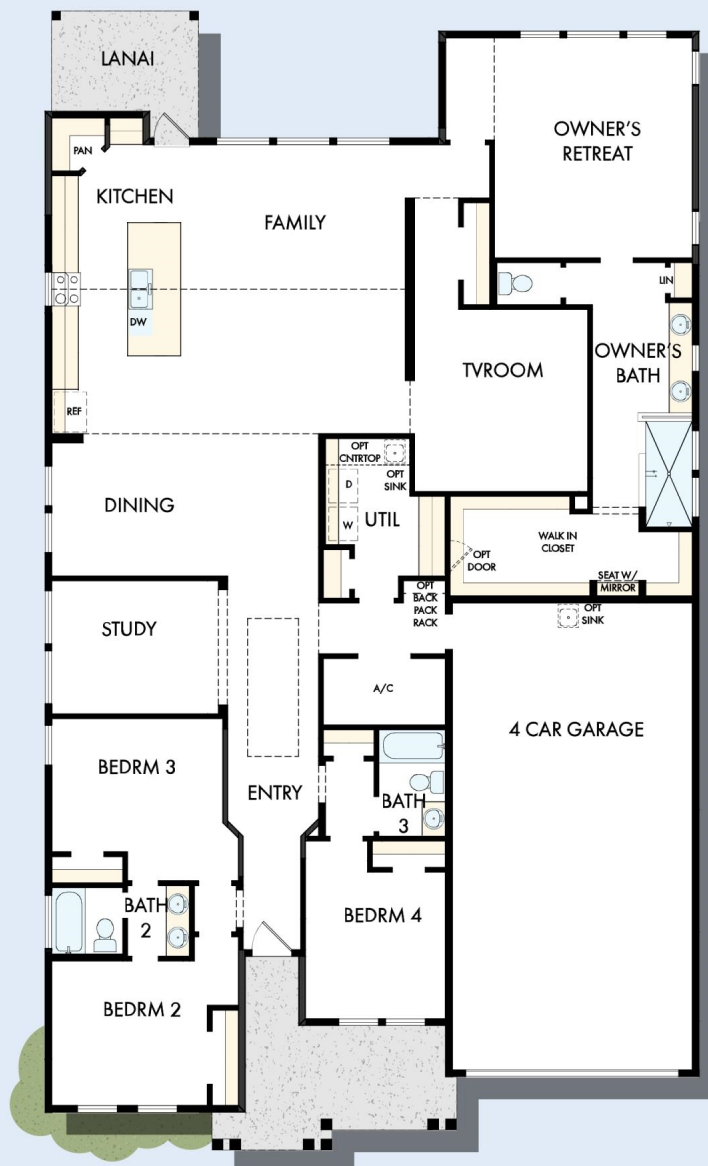
OPTIONAL HOBBY ROOM AT GARAGE



OPTIONAL BEDROOM 5 WITH BATH 4 AT GARAGE



OPTIONAL SEPARATE TUB AND SHOWER AT OWNER'S BATH



B348 in 4468 JAC

For additional options, please visit DavidWeekleyHomes.com

11/15/2022



See a David Weekley Homes Sales Consultant for details. Prices, plans, dimensions, features, specifications, materials, and availability of homes or communities are subject to change without notice or obligation. Illustrations are artist's depictions only and may differ from completed improvements. Copyright © 2022 David Weekley Homes - All Rights Reserved. Jacksonville, FL

DavidWeekleyHomes.com