

THE PALOMAR



6236 SAN-G

Exterior G

2,790 - 2,901 sq. ft.

4 Bedrooms

3 Full Baths

1 Half Bath

2 - 3 Car Garage



6236SAN - H

Exterior H

Sandra A.



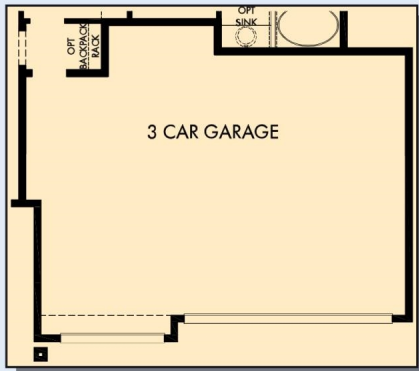
Best Builder Around

We have loved DW homes ever since our mother bought one. The quality of their work, attention to detail and willingness to respond to questions is top notch. The biggest thing we love about DW is their focus on customer service. They are not your typical builder who meets with you to get a check and forgets about you till walk thru. They are your partner through the entire process. Each step of the way they know they are building your dream house and really treat you like family. I would recommend them hands down. My husband sells real estate and has dealt with numerous builders around town. He always directs his clients to DW and signs their praises.

**David Weekley
Homes**

THE PALOMAR

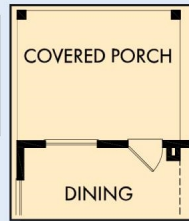
2,790 - 2,901 sq. ft. • 4 Bedrooms • 3 Full Baths • 1 Half Bath • 2 - 3 Car Garage



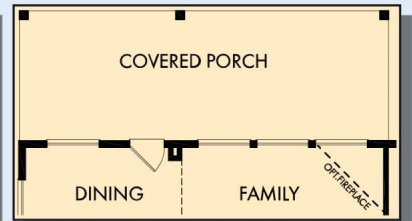
OPTIONAL 3 CAR GARAGE



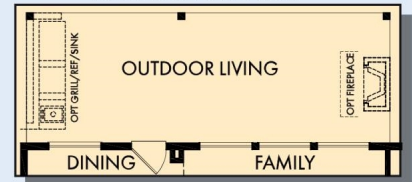
OPTIONAL BAY WINDOW
AT OWNER'S RETREAT



OPTIONAL COVERED
PORCH AT DINING



OPTIONAL EXTENDED COVERED PORCH
AT DINING AND FAMILY



OPTIONAL OUTDOOR LIVING
AT DINING AND FAMILY



OPTIONAL BEDROOM 5
AND BATH 4 AT STUDY



OPTIONAL SHOWER
AT OWNER'S BATH

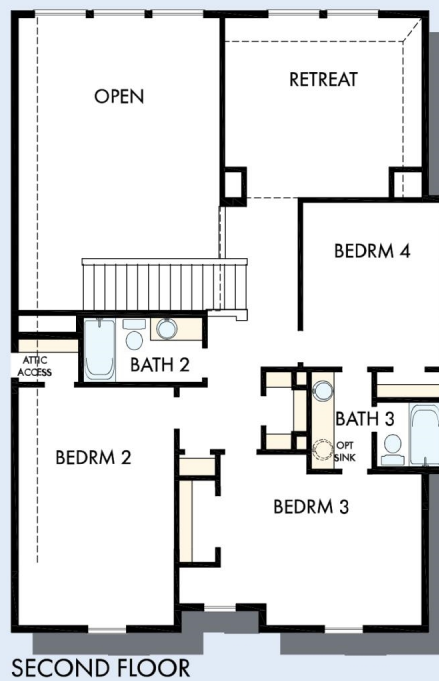


OPTIONAL
SUPER SHOWER
AT OWNER'S BATH



FIRST FLOOR

THE PALOMAR



For additional options, please visit DavidWeekleyHomes.com



See a David Weekley Homes Sales Consultant for details. Prices, plans, dimensions, features, specifications, materials, and availability of homes or communities are subject to change without notice or obligation. Illustrations are artist's depictions only and may differ from completed improvements. Copyright © 2020 David Weekley Homes - All Rights Reserved. San Antonio, TX

DavidWeekleyHomes.com