

THE KEPLEY



Exterior I

2,110 sq. ft.

3 - 4 Bedrooms

2 Full Baths

0 - 2 Half Baths

2 - 3 Car Garage



Exterior J

Rich C.



Wonderful Experience!

If there is anything that sets David Weekley apart from other builders it is their customer service. I felt like a member of the family from the first time I walked into the model, to when I received my keys and saw the wonderful housewarming presents that were left for me, up to the present when I see my salesman in the neighborhood. I felt like they really took the time to understand what I was looking for and then came through with my dream home. I would highly recommend David Weekley to anyone looking to buy and/or build a home.

**David Weekley
Homes**

THE KEPLEY

2,110 sq. ft. • 3 - 4 Bedrooms • 2 Full Baths • 0 - 2 Half Baths • 2 - 3 Car Garage



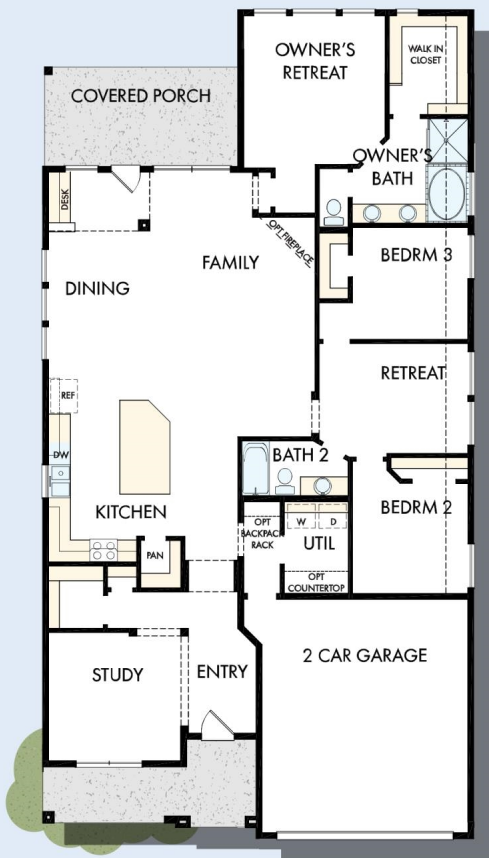
OPTIONAL EXTENDED COVERED PORCH AT FAMILY



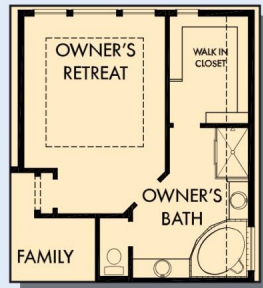
OPTIONAL BAY WINDOW AT OWNER'S RETREAT



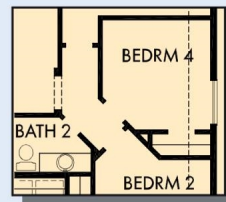
OPTIONAL SHOWER AT OWNER'S BATH



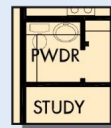
FIRST FLOOR



OPTIONAL SUPER OWNER'S RETREAT



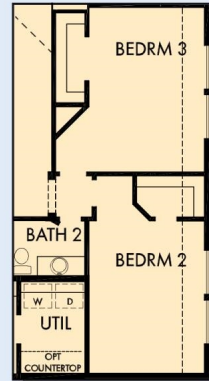
OPTIONAL BEDROOM 4 AT RETREAT



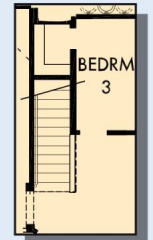
OPTIONAL BATH POWDER



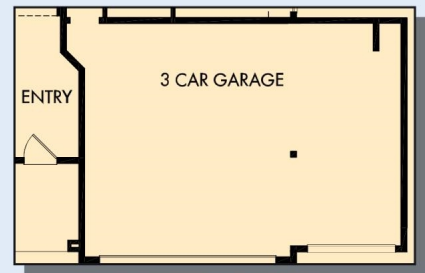
OPTIONAL SUPER SHOWER AT OWNER'S BATH



OPTIONAL EXTENDED BEDROOM 2 AND 3

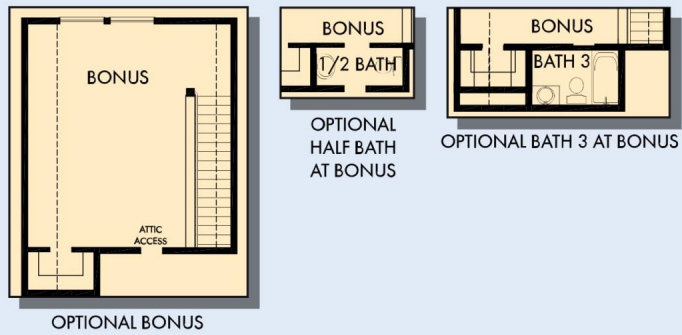


FIRST FLOOR WITH OPTIONAL SECOND FLOOR BONUS



OPTIONAL 3 CAR GARAGE

THE KEPLEY



For additional options, please visit DavidWeekleyHomes.com



See a David Weekley Homes Sales Consultant for details. Prices, plans, dimensions, features, specifications, materials, and availability of homes or communities are subject to change without notice or obligation. Illustrations are artist's depictions only and may differ from completed improvements. Copyright © 2019 David Weekley Homes - All Rights Reserved. San Antonio, TX

DavidWeekleyHomes.com