

THE SPICEWOOD



5248DAI-A

Exterior A

2,569 sq. ft.

3 Bedrooms

2 Full Baths

1 Half Bath

2 Car Garage



5248DAL-B

Exterior B

Shane



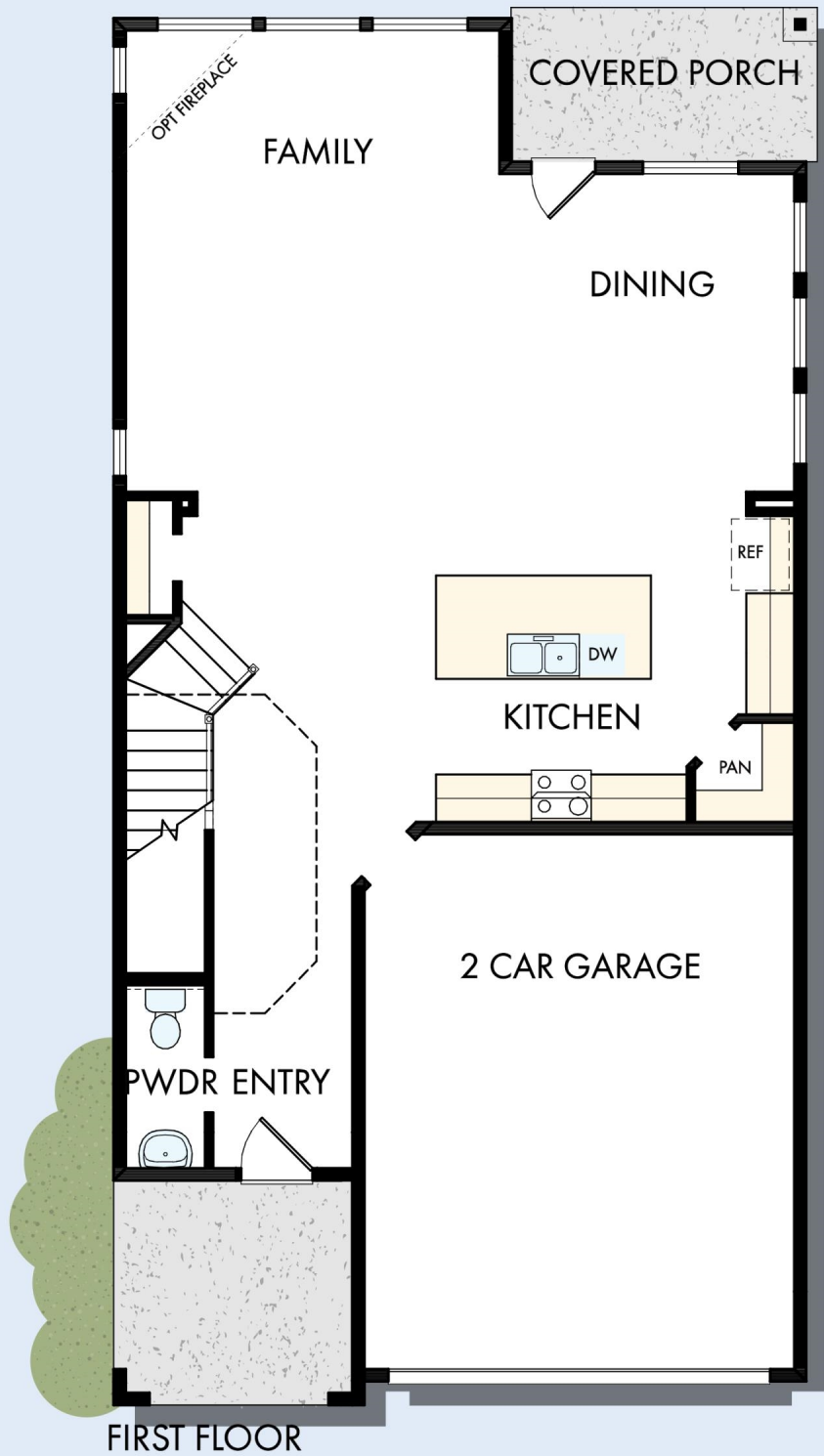
We're living our fairytale thanks to David Weekley

We can't say enough about the level of quality and care we received while building our home. Our builder was with us every step of the way to make sure our every need and desire was being met! The team truly went above and beyond at every turn to give us the home of our dreams! We will definitely recommend David Weekley to anyone looking to build a new home!

**David Weekley
Homes**

THE SPICEWOOD

2,569 sq. ft. • 3 Bedrooms • 2 Full Baths • 1 Half Bath • 2 Car Garage



FIRST FLOOR

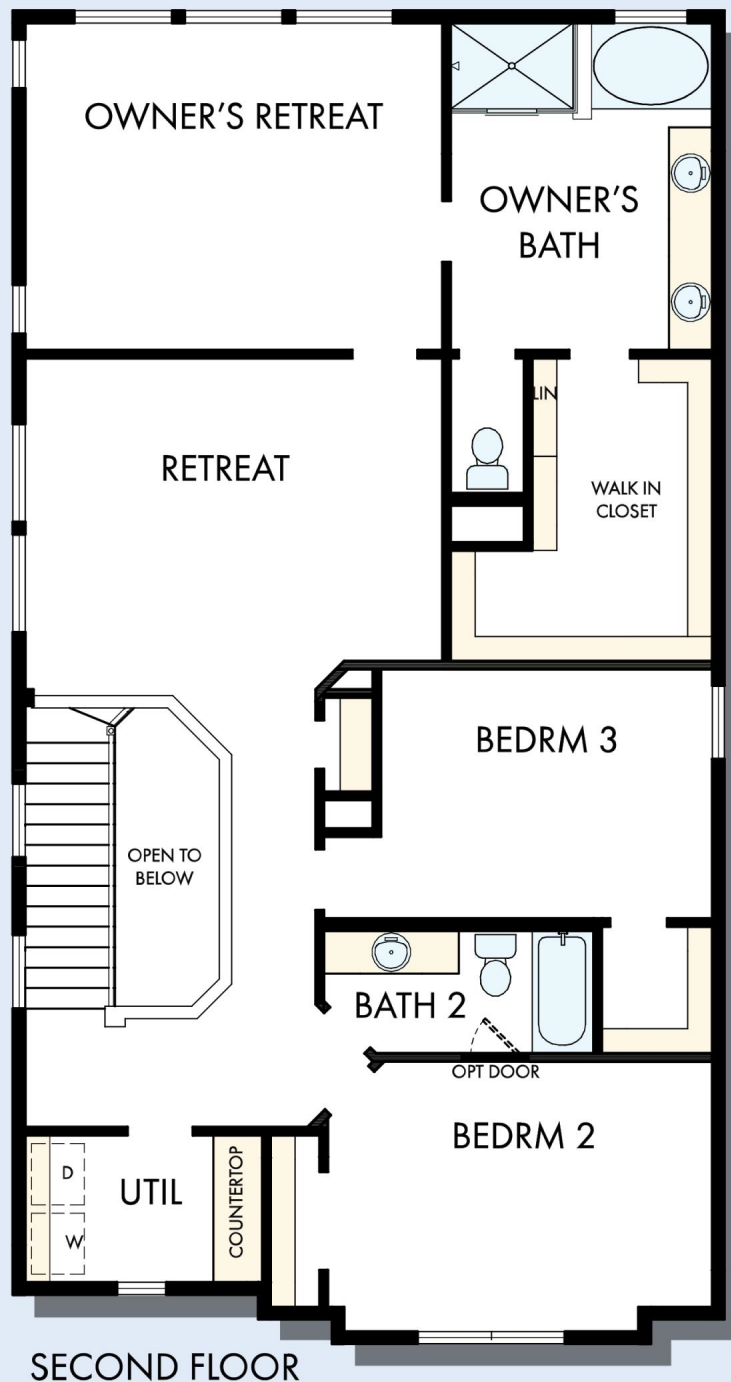
5248 in 1911 DAL

For additional options, please visit DavidWeekleyHomes.com

12/17/2019

DavidWeekleyHomes.com

THE SPICEWOOD



OPTIONAL SUPER SHOWER AT OWNER'S BATH

For additional options, please visit DavidWeekleyHomes.com

DavidWeekleyHomes.com

See a David Weekley Homes Sales Consultant for details. Prices, plans, dimensions, features, specifications, materials, and availability of homes or communities are subject to change without notice or obligation. Illustrations are artist's depictions only and may differ from completed improvements. Copyright © 2019 David Weekley Homes - All Rights Reserved. Dallas/Ft. Worth, TX

