

THE JEWEL



Exterior F

2,745 - 2,779 sq. ft.

4 - 5 Bedrooms

3 - 4 Full Baths

2 Car Garage



Exterior K

Gigi and Papa



THE BESTest - Better than all the rest!

What an awesome and personal family-oriented company! From touring model homes to selecting "THE ONE" just for us, the experience was delightful and amazing! The entire David Weekley team has been exceptionally wonderful and always available to address any issues we encountered. We have been amazed and impressed by the "Service after the Sale" approach by the David Weekley staff. We would recommend David Weekley homes to anyone. We feel like we are an important member of the Weekley family!

**David Weekley
Homes**

THE JEWEL

2,745 - 2,779 sq. ft. • 4 - 5 Bedrooms • 3 - 4 Full Baths • 2 Car Garage



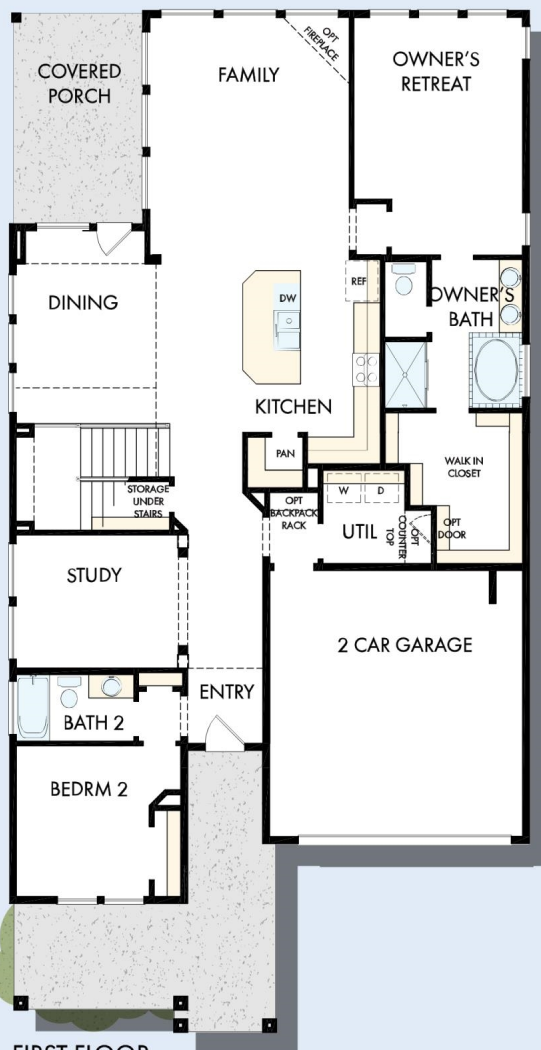
OPTIONAL BAY WINDOW AT OWNER'S RETREAT



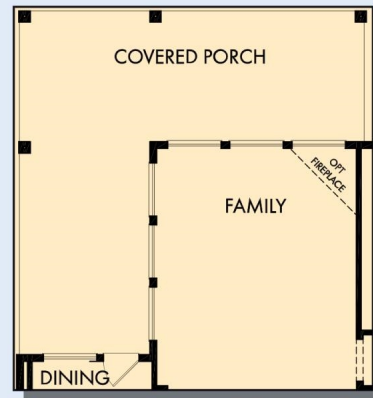
OPTIONAL SHOWER AT OWNER'S BATH



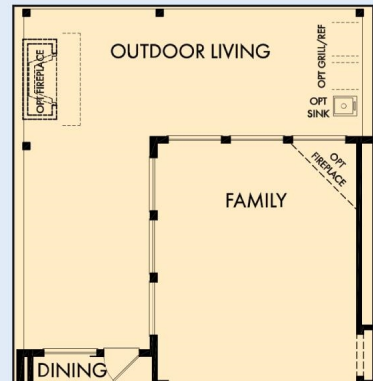
OPTIONAL SUPER SHOWER AT OWNER'S BATH



FIRST FLOOR



OPTIONAL EXTENDED COVERED PORCH AT DINING

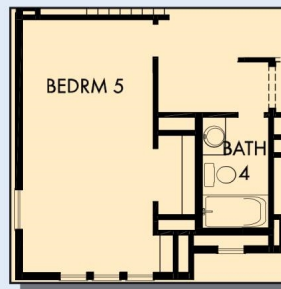


OPTIONAL OUTDOOR LIVING AT DINING

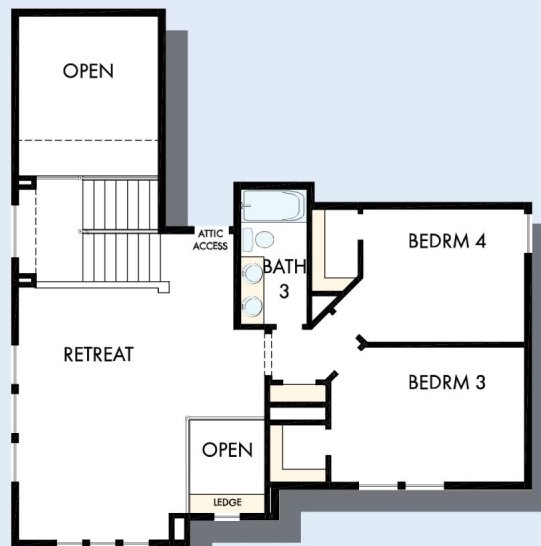
THE JEWEL



OPTIONAL GAMEROOM AT STAIRS



OPTIONAL BEDROOM 5 WITH
BATH 4 AT RETREAT



SECOND FLOOR

For additional options, please visit DavidWeekleyHomes.com



See a David Weekley Homes Sales Consultant for details.
Prices, plans, dimensions, features, specifications, materials,
and availability of homes or communities are subject to
change without notice or obligation. Illustrations are artist's
depictions only and may differ from completed improvements.
Copyright © 2020 David Weekley Homes - All Rights Reserved.
San Antonio, TX

DavidWeekleyHomes.com