

THE HAMMEL



Exterior A



Exterior B

1,631 sq. ft.

3 - 4 Bedrooms

2 - 3 Full Baths

1 - 2 Half Baths

2 Car Garage

Crystal W.
Atlanta, GA



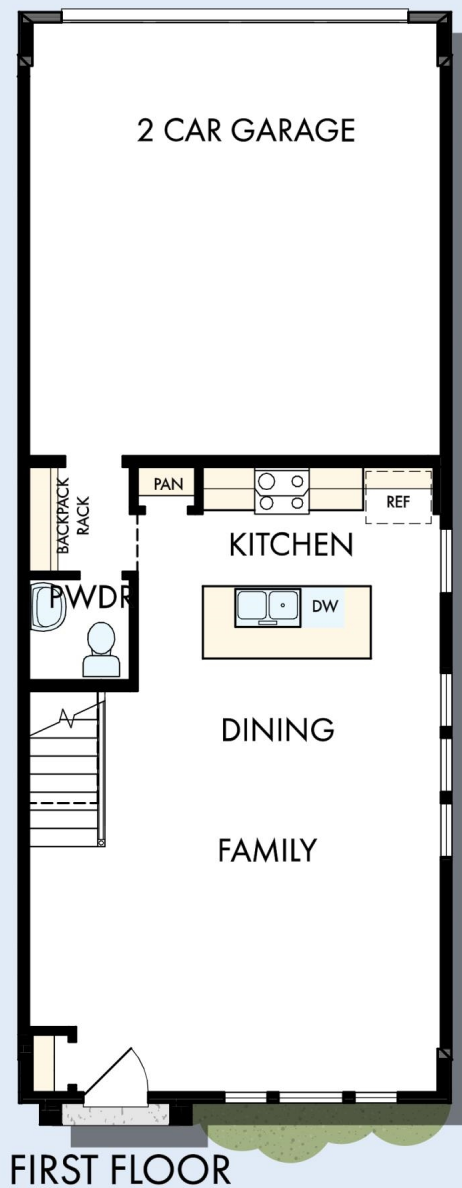
Welcome Home

My DWHome's experience has been truly 5-stars! From a floorplan concept, reserving a lot filled with dirt, the homebuilding project, to "Welcome Home", the entire process has been amazing. The team provided regular feedback and were always available to address questions and concerns. I was sold on the quality features. The entire team's availability and service has been exceptional before and after closing. Looking forward to enjoying our new home and neighbors for many years to come!

**David Weekley
Homes**

THE HAMMEL

1,631 sq. ft. • 3 - 4 Bedrooms • 2 - 3 Full Baths • 1 - 2 Half Baths • 2 Car Garage



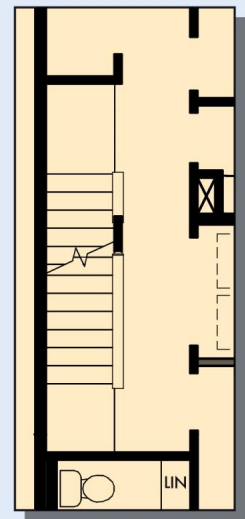
9765 in 4221 IND

For additional options, please visit DavidWeekleyHomes.com

11/20/2019

DavidWeekleyHomes.com

THE HAMMEL



SECOND FLOOR
WITH OPTIONAL
THIRD FLOOR
GAMEROOM

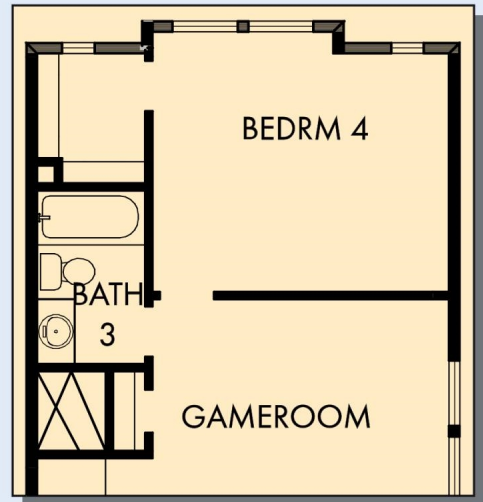
For additional options, please visit DavidWeekleyHomes.com

DavidWeekleyHomes.com

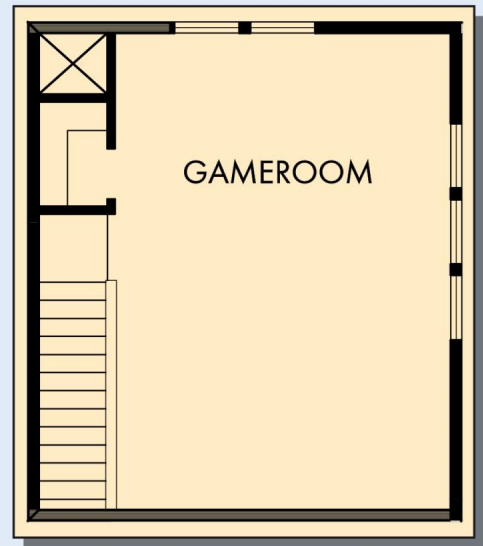
THE HAMMEL



OPTIONAL HALF BATH
AT GAMEROOM



OPTIONAL BEDROOM 4 AND BATH 3
AT GAMEROOM



OPTIONAL GAMEROOM

For additional options, please visit DavidWeekleyHomes.com



See a David Weekley Homes Sales Consultant for details.
Prices, plans, dimensions, features, specifications, materials,
and availability of homes or communities are subject to
change without notice or obligation. Illustrations are artist's
depictions only and may differ from completed improvements.
Copyright © 2019 David Weekley Homes - All Rights Reserved.
Indianapolis, IN

DavidWeekleyHomes.com