

THE BRENTWOOD



Exterior A

2,194 sq. ft.

3 Bedrooms

2 Full Baths

2 Car Garage



Exterior B

Gigi and Papa



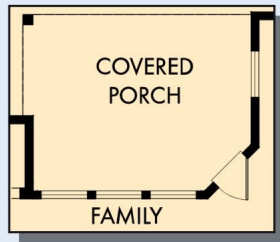
THE BESTest - Better than all the rest!

What an awesome and personal family-oriented company! From touring model homes to selecting "THE ONE" just for us, the experience was delightful and amazing! The entire David Weekley team has been exceptionally wonderful and always available to address any issues we encountered. We have been amazed and impressed by the "Service after the Sale" approach by the David Weekley staff. We would recommend David Weekley homes to anyone. We feel like we are an important member of the Weekley family!

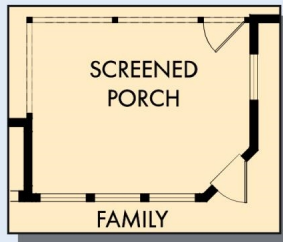
**David Weekley
Homes**

THE BRENTWOOD

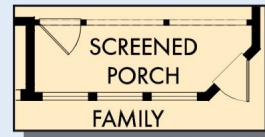
2,194 sq. ft. • 3 Bedrooms • 2 Full Baths • 2 Car Garage



OPTIONAL EXTENDED COVERED PORCH



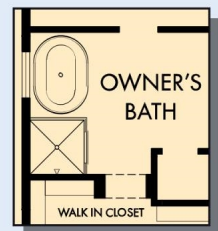
OPTIONAL EXTENDED SCREENED PORCH



OPTIONAL SCREENED PORCH



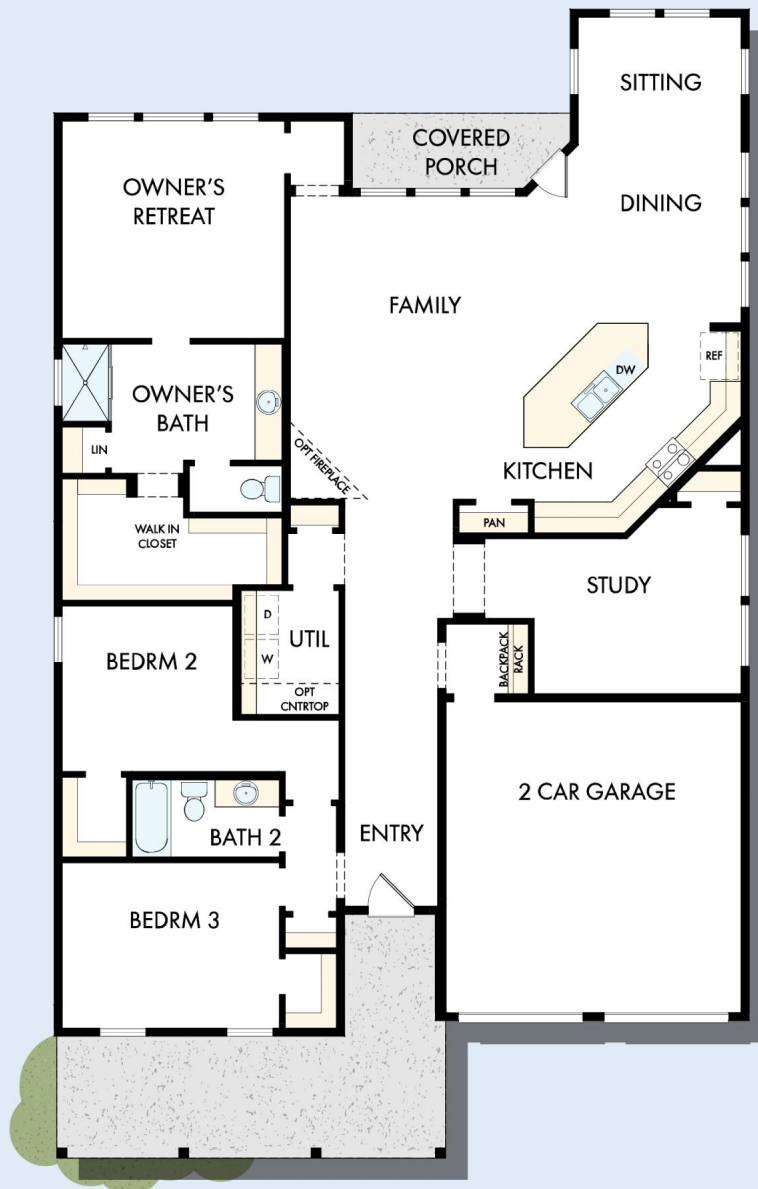
OPTIONAL SUPER SHOWER AT OWNER'S BATH



OPTIONAL FREE STANDING TUB WITH SEPARATE SHOWER AT OWNER'S BATH



OPTIONAL DROP IN TUB WITH SEPARATE SHOWER AT OWNER'S BATH



A227 in 4550 CSC

For additional options, please visit DavidWeekleyHomes.com

2/22/2023

See a David Weekley Homes Sales Consultant for details. Prices, plans, dimensions, features, specifications, materials, and availability of homes or communities are subject to change without notice or obligation. Illustrations are artist's depictions only and may differ from completed improvements. Copyright © 2023 David Weekley Homes - All Rights Reserved. Charleston, SC

DavidWeekleyHomes.com

