

# THE FT. STALLINGS

sq. ft.

---

Bedrooms

---

Full Baths

---

Half Baths

---

Car Garage

**David Weekley  
Homes**



## Chelsea



### **Incredible Experience, Incredible Home!**

We trusted the team from Day 1 and couldn't have asked for a better experience. The attention to detail was fantastic, and we felt as if the DWH team had a personal interest in the success of our home. The process was well defined and every team member set very clear expectations. We love every inch of our home, and we'd definitely recommend DWH!

## Meg S.

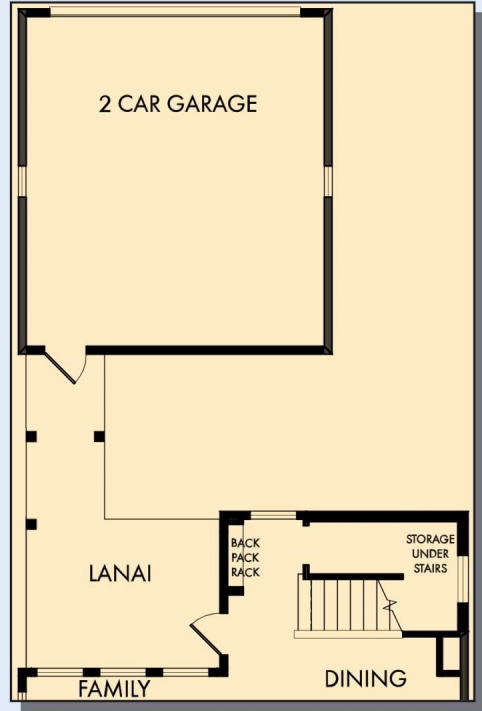


### **Truly treated us like family!!!**

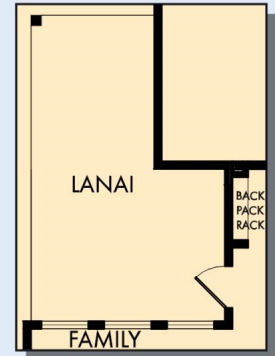
We enjoyed every part of the home building process. It was amazing! Our builder was always keeping us informed and really went above and beyond to ensure that we love our home. Our warranty rep is outstanding and continues to take care of our every need. I couldn't have asked for a better experience. Our builder and warranty rep continue to be there for us as a family. While our interactions with the DW Family have been highly professional, we are also lucky enough to be able to call them some of our greatest friends! Wouldn't change a thing!

# THE FT. STALLINGS

sq. ft. • Bedrooms • Full Baths • Half Baths • Car Garage

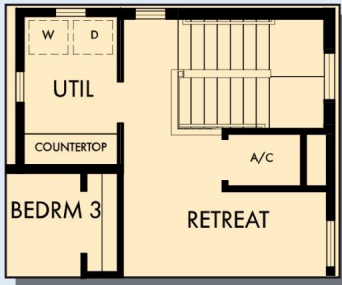


FIRST FLOOR WITH OPTIONAL DETACHED 2 CAR GARAGE



OPTIONAL EXTENDED LANAI

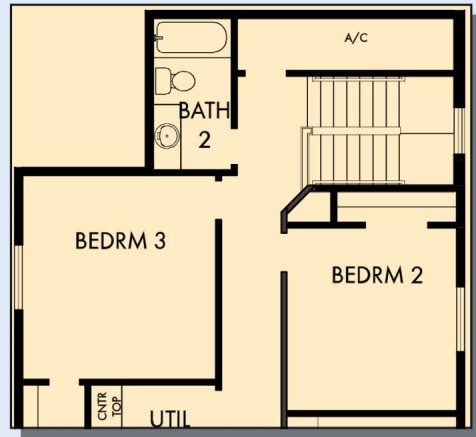
# THE FT. STALLINGS



SECOND FLOOR WITH OPTIONAL  
DETACHED 2 CAR GARAGE



OPTIONAL SEPARATE TUB  
AND SHOWER AT  
OWNER'S BATH



OPTIONAL EXTENDED  
BEDROOM 2 AND 3



SECOND FLOOR

For additional options, please visit [DavidWeekleyHomes.com](http://DavidWeekleyHomes.com)

See a David Weekley Homes Sales Consultant for details. Prices, plans, dimensions, features, specifications, materials, and availability of homes or communities are subject to change without notice or obligation. Illustrations are artist's depictions only and may differ from completed improvements. Copyright © 2024 David Weekley Homes - All Rights Reserved. Jacksonville, FL

**DavidWeekleyHomes.com**

