

# THE SKIPPER



Exterior A



Exterior B

2,640 - 2,642 sq. ft.

5 Bedrooms

3 Full Baths

3 Car Garage

**Sandra A.**



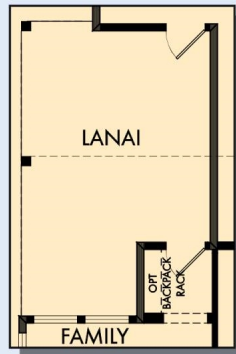
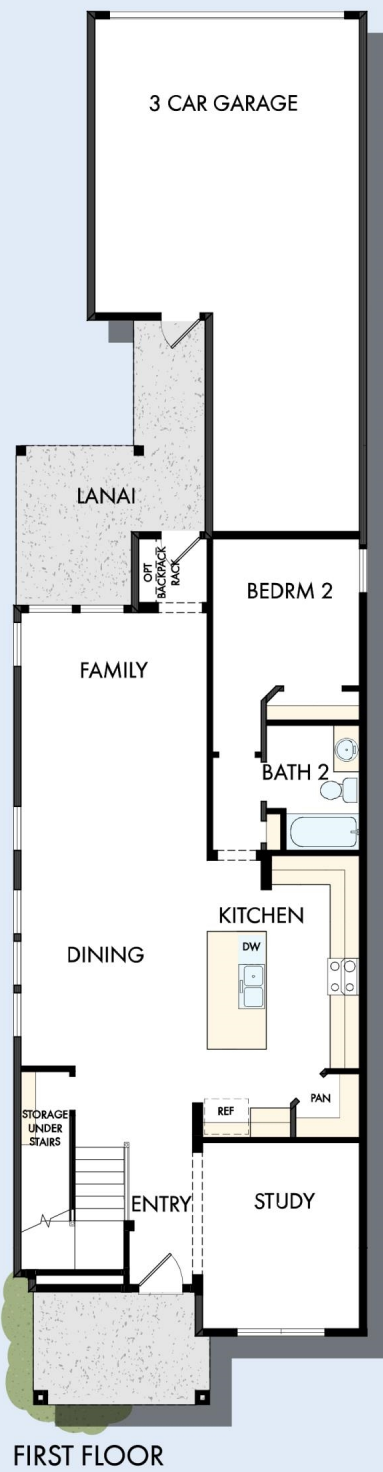
### **Best Builder Around**

We have loved DW homes ever since our mother bought one. The quality of their work, attention to detail and willingness to respond to questions is top notch. The biggest thing we love about DW is their focus on customer service. They are not your typical builder who meets with you to get a check and forgets about you till walk thru. They are your partner through the entire process. Each step of the way they know they are building your dream house and really treat you like family. I would recommend them hands down. My husband sells real estate and has dealt with numerous builders around town. He always directs his clients to DW and signs their praises.

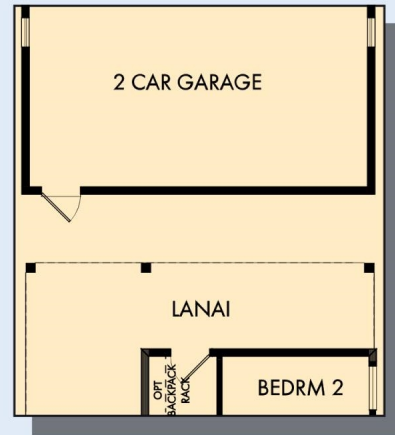
**David Weekley  
Homes**

# THE SKIPPER

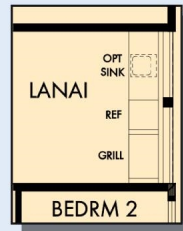
2,640 - 2,642 sq. ft. • 5 Bedrooms • 3 Full Baths • 3 Car Garage



OPTIONAL EXTENDED LANAI AT FAMILY



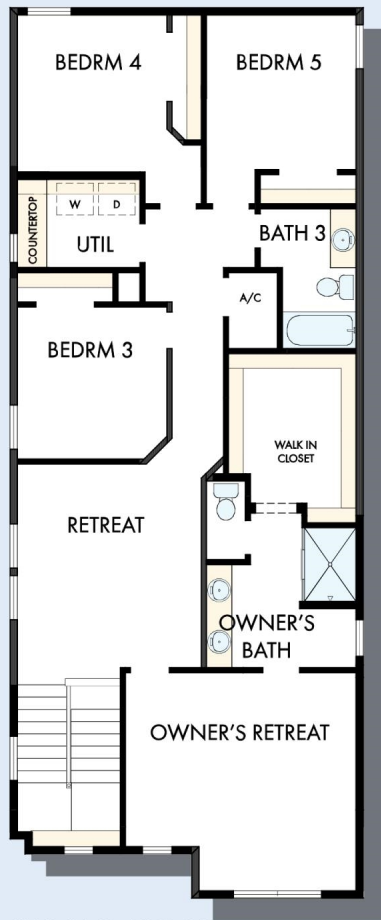
FIRST FLOOR WITH OPTIONAL DETACHED 2 CAR GARAGE



OPTIONAL OUTDOOR KITCHEN AT LANAI



# THE SKIPPER



SECOND FLOOR



OPTIONAL SUPER SHOWER AT OWNER'S BATH



OPTIONAL FREE STANDING TUB WITH SEPARATE SHOWER AT OWNER'S BATH



OPTIONAL SLIP IN TUB WITH SEPARATE SHOWER AT OWNER'S BATH

For additional options, please visit [DavidWeekleyHomes.com](http://DavidWeekleyHomes.com)

See a David Weekley Homes Sales Consultant for details. Prices, plans, dimensions, features, specifications, materials, and availability of homes or communities are subject to change without notice or obligation. Illustrations are artist's depictions only and may differ from completed improvements. Copyright © 2022 David Weekley Homes - All Rights Reserved. Orlando, FL

**DavidWeekleyHomes.com**

