

# THE CARSTEN



Exterior C

1,941 sq. ft.

3 Bedrooms

3 Full Baths

1 - 2 Half Baths

2 Car Garage

## Shane



### We're living our fairytale thanks to David Weekley

We can't say enough about the level of quality and care we received while building our home. Our builder was with us every step of the way to make sure our every need and desire was being met! The team truly went above and beyond at every turn to give us the home of our dreams! We will definitely recommend David Weekley to anyone looking to build a new home!

## Chelsea

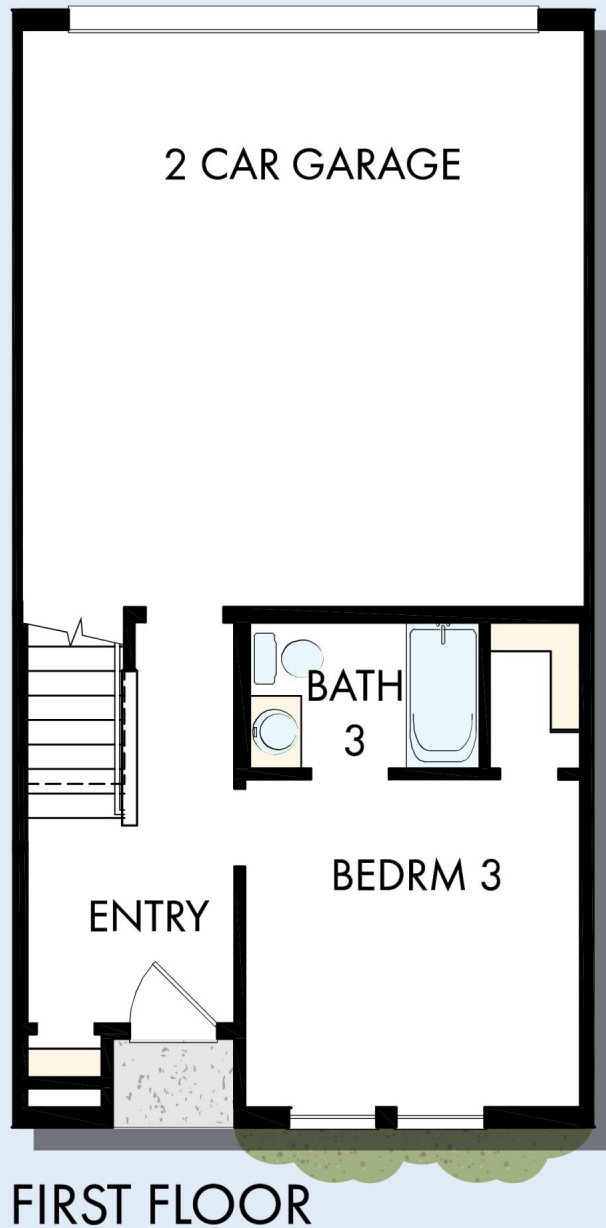


### Incredible Experience, Incredible Home!

We trusted the team from Day 1 and couldn't have asked for a better experience. The attention to detail was fantastic, and we felt as if the DWH team had a personal interest in the success of our home. The process was well defined and every team member set very clear expectations. We love every inch of our home, and we'd definitely recommend DWH!

# THE CARSTEN

1,941 sq. ft. • 3 Bedrooms • 3 Full Baths • 1 - 2 Half Baths • 2 Car Garage



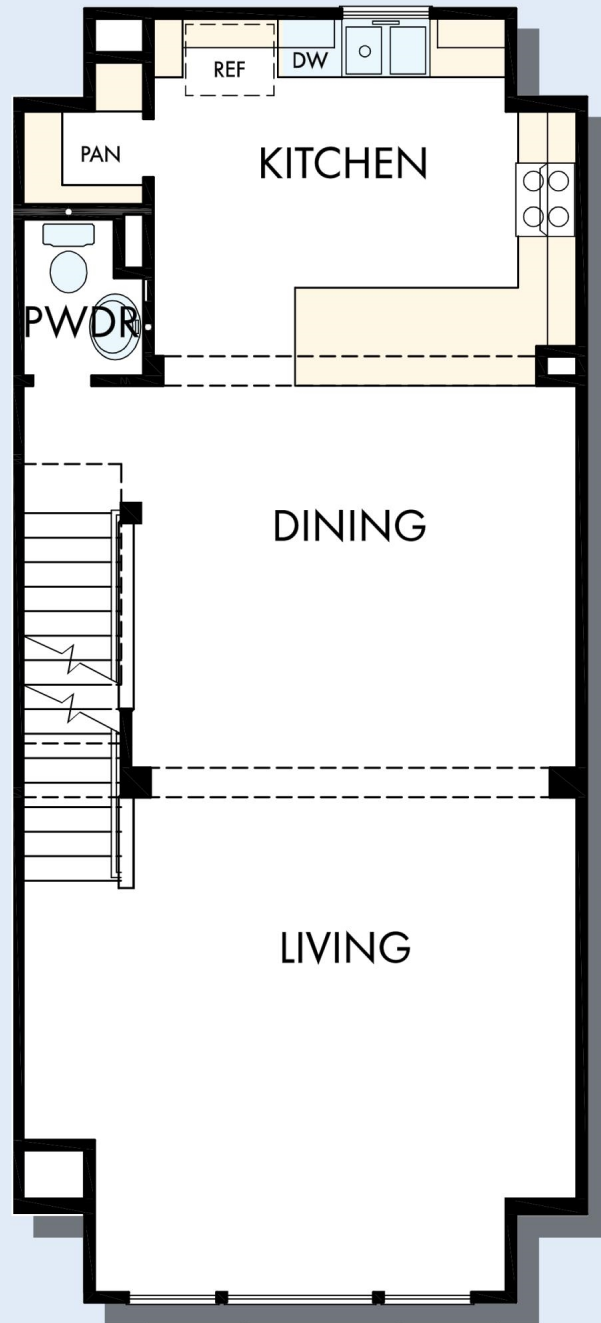
8524 in 3917 TAM

For additional options, please visit [DavidWeekleyHomes.com](http://DavidWeekleyHomes.com)

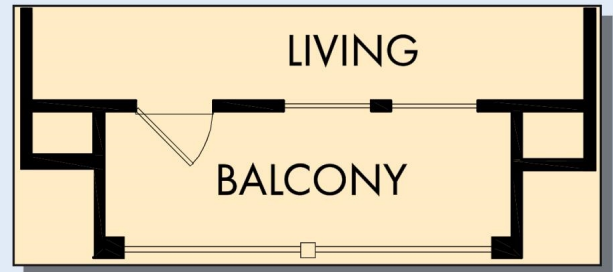
10/22/2021

CENTRAL LIVING  
by David Weekley Homes

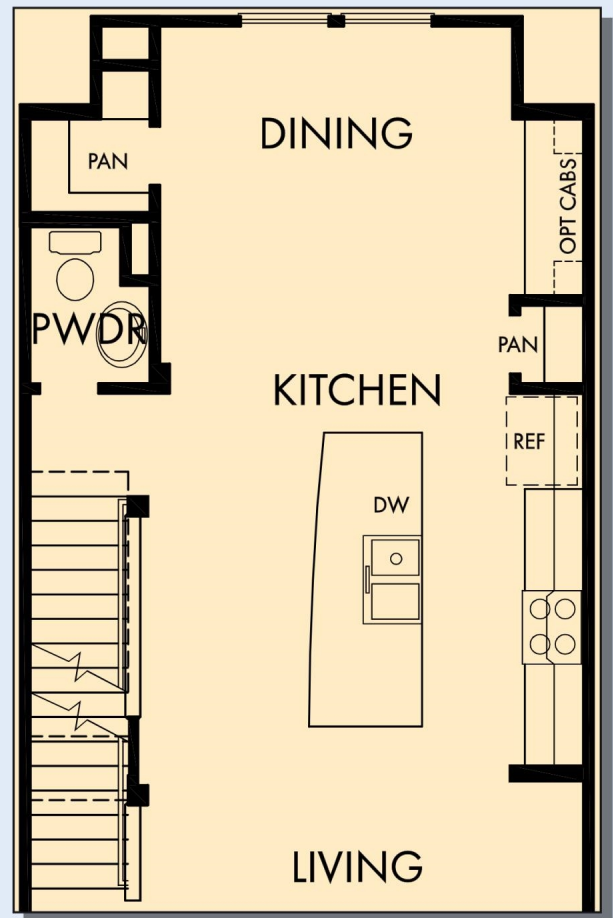
# THE CARSTEN



SECOND FLOOR



OPTIONAL BALCONY  
AT LIVING



OPTIONAL KITCHEN LAYOUT

For additional options, please visit [DavidWeekleyHomes.com](http://DavidWeekleyHomes.com)

CENTRAL LIVING  
by David Weekley Homes

# THE CARSTEN



THIRD FLOOR

For additional options, please visit [DavidWeekleyHomes.com](http://DavidWeekleyHomes.com)



See a David Weekley Homes Sales Consultant for details. Prices, plans, dimensions, features, specifications, materials, and availability of homes or communities are subject to change without notice or obligation. Illustrations are artist's depictions only and may differ from completed improvements. Copyright © 2021 David Weekley Homes - All Rights Reserved. Tampa, FL

**CENTRAL LIVING**  
*by* **David Weekley Homes**