

# THE HARPIN



Exterior A

2,160 sq. ft.

2 - 3 Bedrooms

3 Full Baths

2 Car Garage



Exterior B

**Shane**



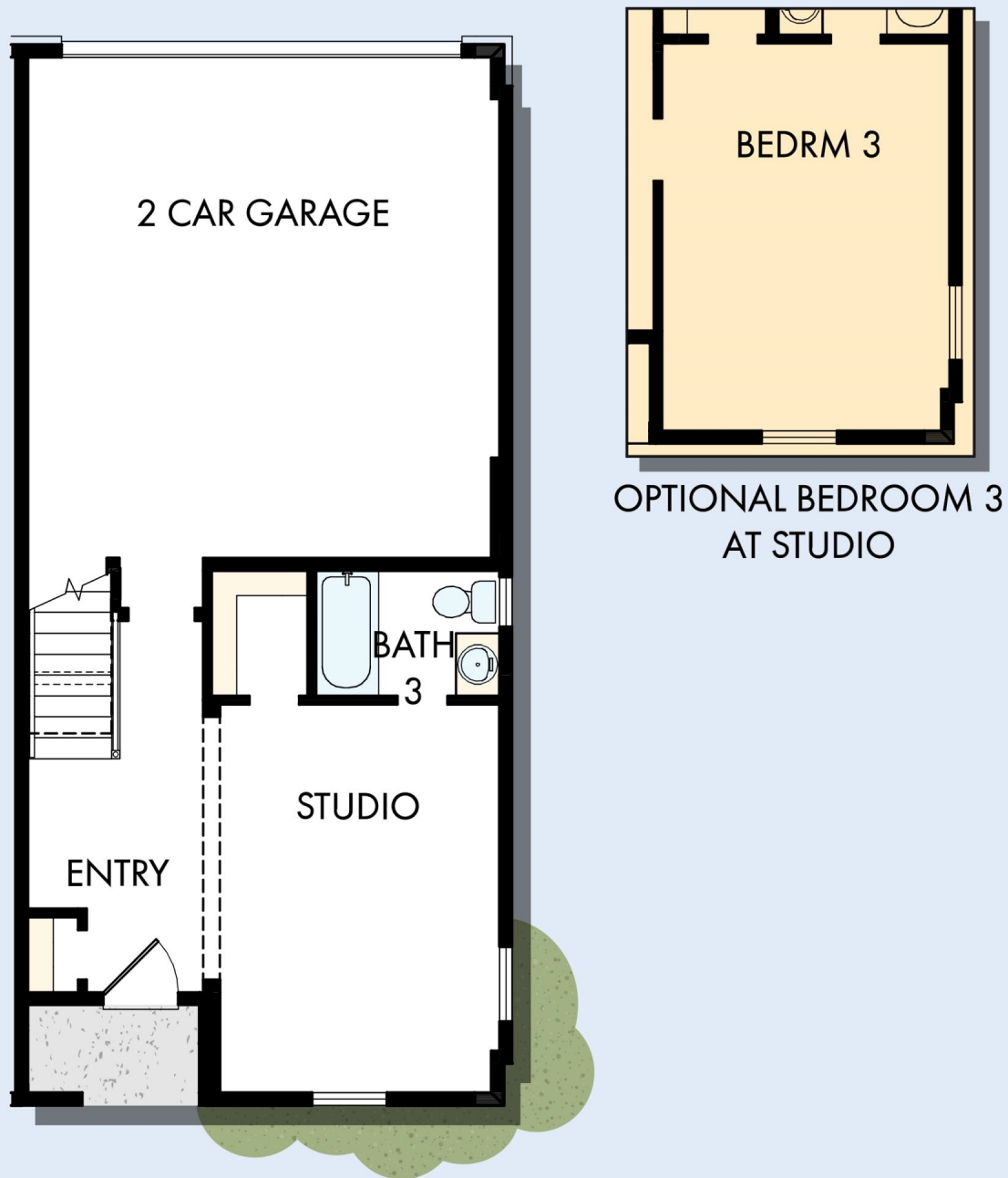
## **We're living our fairytale thanks to David Weekley**

We can't say enough about the level of quality and care we received while building our home. Our builder was with us every step of the way to make sure our every need and desire was being met! The team truly went above and beyond at every turn to give us the home of our dreams! We will definitely recommend David Weekley to anyone looking to build a new home!

CENTRAL LIVING  
by David Weekley Homes

# THE HARPIN

2,160 sq. ft. • 2 - 3 Bedrooms • 3 Full Baths • 2 Car Garage



FIRST FLOOR

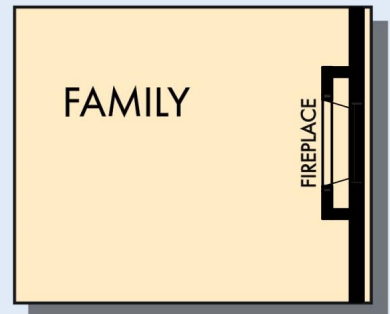
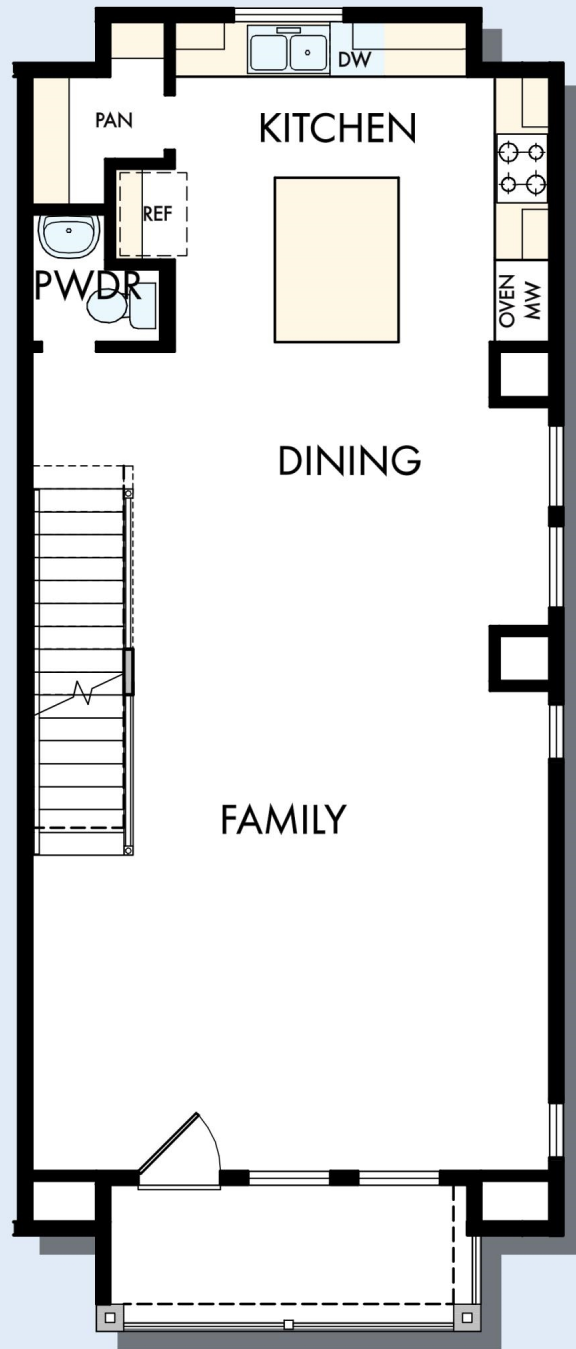
9776 in 4672 ATL

For additional options, please visit [DavidWeekleyHomes.com](http://DavidWeekleyHomes.com)

10/10/2019

CENTRAL LIVING  
by David Weekley Homes

# THE HARPIN



OPTIONAL FIREPLACE  
AT FAMILY

SECOND FLOOR

For additional options, please visit [DavidWeekleyHomes.com](http://DavidWeekleyHomes.com)

CENTRAL LIVING  
by David Weekley Homes

# THE HARPIN



OPTIONAL SUPER  
SHOWER AT  
OWNER'S BATH

## THIRD FLOOR

For additional options, please visit [DavidWeekleyHomes.com](http://DavidWeekleyHomes.com)



See a David Weekley Homes Sales Consultant for details. Prices, plans, dimensions, features, specifications, materials, and availability of homes or communities are subject to change without notice or obligation. Illustrations are artist's depictions only and may differ from completed improvements. Copyright © 2019 David Weekley Homes - All Rights Reserved. Atlanta, GA

**CENTRAL LIVING**  
by **David Weekley Homes**