

THE PADDOCK



Exterior B

2,841 - 4,304 sq. ft.

4 - 5 Bedrooms

3 - 4 Full Baths

1 Half Bath

3 Car Garage

Jordan



Greatly exceeded every expectation! A+++!

The entire experience was excellent from the first day I showed up to look at houses. The whole team came together to provide a truly quality house that I will be living in for years to come. Kajal helped me purchase the house and coordinated all meetings. She was very cheerful and professional at all times and I could tell that she cared about her clients and my family. Jeff and Robbie were builders that always went the extra mile to ensure total customer satisfaction. Jeff was very helpful and I am grateful to his management and know that I will be moving in to a house that is built right with a great attention to detail... Ashley also provided Kajal with assistance whenever Kajal was not available. I could not be happier with everyone involved in building this house. David Weekley is a great company and I would enthusiastically recommend them to others needing a quality house built in the future. Thank you for such a great experience and I hope that this company continues to grow.

Crystal W.



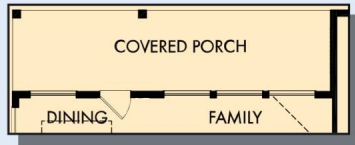
Welcome Home

My DWHome experience has been truly 5-stars! From a floorplan concept, reserving a lot filled with dirt, the homebuilding project, to "Welcome Home", the entire process has been amazing. The team provided regular feedback and were always available to address questions and concerns. I was sold on the quality features. The entire team's availability and service has been exceptional before and after closing. Looking forward to enjoying our new home and neighbors for many years to come!

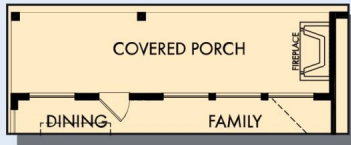
**David Weekley
Homes**

THE PADDOCK

2,841 - 4,304 sq. ft. • 4 - 5 Bedrooms • 3 - 4 Full Baths • 1 Half Bath • 3 Car Garage



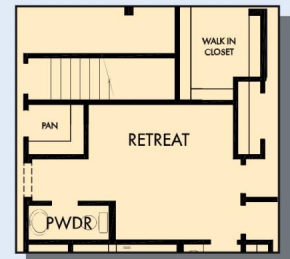
OPTIONAL COVERED PORCH AT FAMILY AND DINING



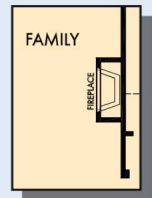
OPTIONAL COVERED PORCH WITH OUTDOOR FIREPLACE AT DINING AND FAMILY



OPTIONAL SUPER SHOWER AT OWNER'S BATH

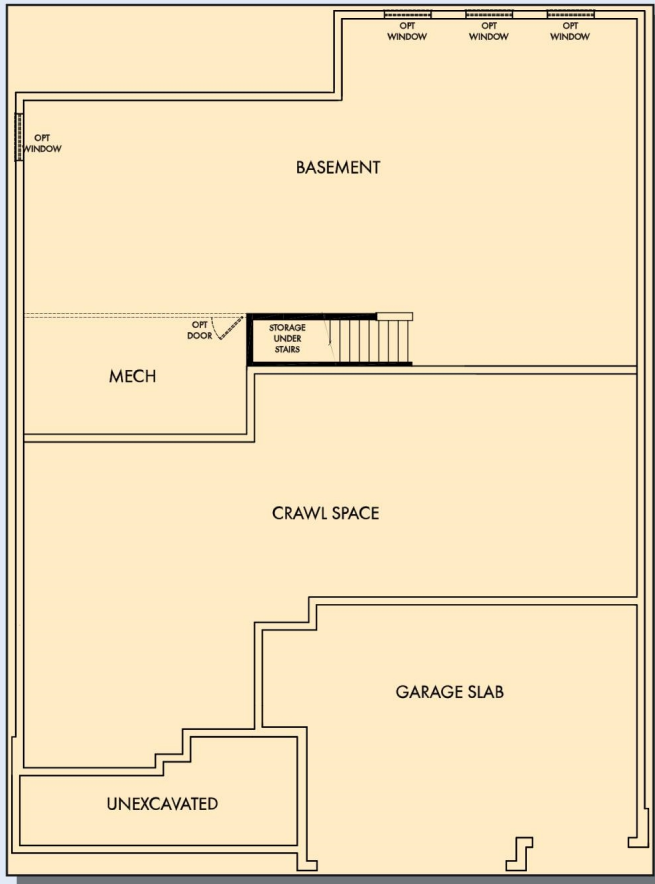


FIRST FLOOR WITH OPTIONAL BASEMENT

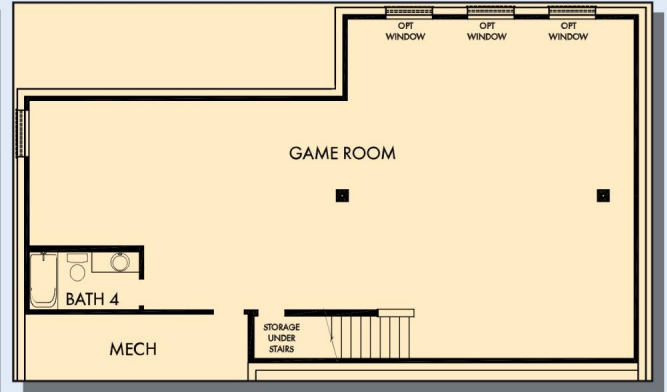


OPTIONAL WALL FIREPLACE AT FAMILY

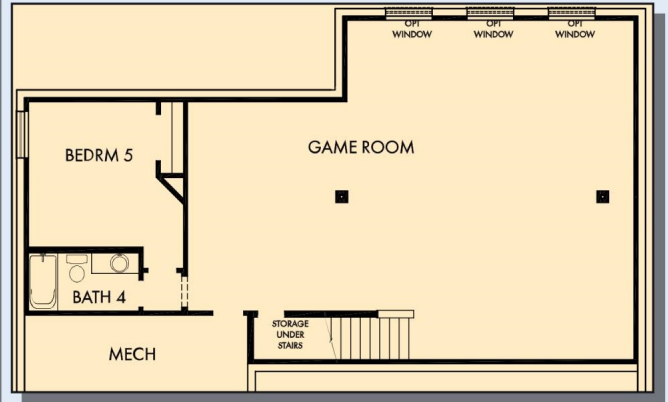
THE PADDOCK



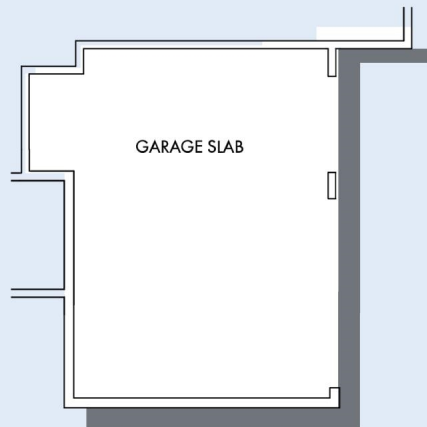
OPTIONAL BASEMENT



OPTIONAL GAME ROOM WITH BATH 4 AT BASEMENT



OPTIONAL GAME ROOM WITH BEDROOM 5 AND BATH 4 AT BASEMENT



For additional options, please visit DavidWeekleyHomes.com

See a David Weekley Homes Sales Consultant for details. Prices, plans, dimensions, features, specifications, materials, and availability of homes or communities are subject to change without notice or obligation. Illustrations are artist's depictions only and may differ from completed improvements. Copyright © 2024 David Weekley Homes - All Rights Reserved. Indianapolis, IN

DavidWeekleyHomes.com

