

# THE BLOSSOMDALE



Exterior A

2,477 - 2,506 sq. ft.

4 Bedrooms

3 Full Baths

2 - 3 Car Garage



Exterior B

**Gigi and Papa**



## **THE BESTest - Better than all the rest!**

What an awesome and personal family-oriented company! From touring model homes to selecting "THE ONE" just for us, the experience was delightful and amazing! The entire David Weekley team has been exceptionally wonderful and always available to address any issues we encountered. We have been amazed and impressed by the "Service after the Sale" approach by the David Weekley staff. We would recommend David Weekley homes to anyone. We feel like we are an important member of the Weekley family!

**Imagination**  
by David Weekley Homes

# THE BLOSSOMDALE

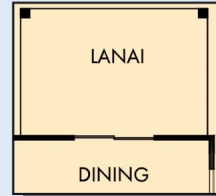
2,477 - 2,506 sq. ft. • 4 Bedrooms • 3 Full Baths • 2 - 3 Car Garage



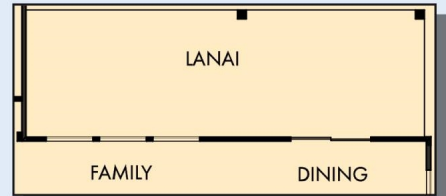
OPTIONAL SHOWER AT  
OWNER'S BATH



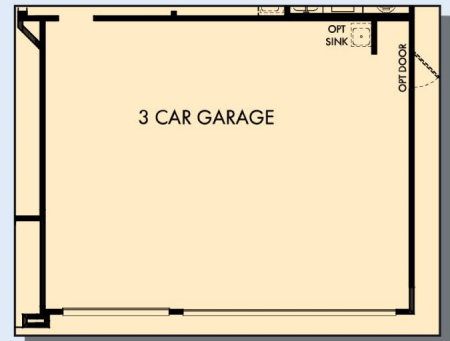
OPTIONAL TUB AND  
SHOWER AT  
OWNER'S BATH



OPTIONAL LANAI  
AT DINING



OPTIONAL EXTENDED LANAI AT FAMILY AND DINING



OPTIONAL 3 CAR GARAGE AT STORAGE

6883 in 4479 JAC

For additional options, please visit [DavidWeekleyHomes.com](http://DavidWeekleyHomes.com)

3/31/2020



See a David Weekley Homes Sales Consultant for details. Prices, plans, dimensions, features, specifications, materials, and availability of homes or communities are subject to change without notice or obligation. Illustrations are artist's depictions only and may differ from completed improvements. Copyright © 2020 David Weekley Homes - All Rights Reserved. Jacksonville, FL

**Imagination**  
by David Weekley Homes