

# THE BAYMEADOW



Exterior A

1,517 - 1,607 sq. ft.

2 - 3 Bedrooms

2 Full Baths

2 Car Garage



Exterior B

Lauren L.



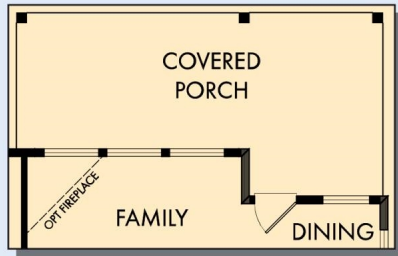
### Home is where the heart is.

Years we waited to buy a house. Painful years of raising children in someone else's home. Years I got to ponder what it would be like to have something of my own. I envisioned my children sitting in their home, playing in their rooms, running through their yard...and the days of waiting were over, all of my research paid off. We bought the house of my dreams and were given the best sales associate and builder, down to my warranty specialist. Everything was easy and seamless. I felt like we were working together, like a team. Now, I have a beautiful house that I know was built with integrity. I could not be more grateful.

**Encore**  
by David Weekley Homes

# THE BAYMEADOW

1,517 - 1,607 sq. ft. • 2 - 3 Bedrooms • 2 Full Baths • 2 Car Garage



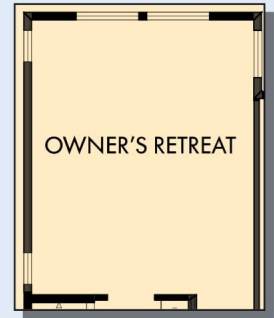
OPTIONAL EXTENDED COVERED PORCH AT FAMILY AND DINING



OPTIONAL SUPER SHOWER AT OWNER'S BATH



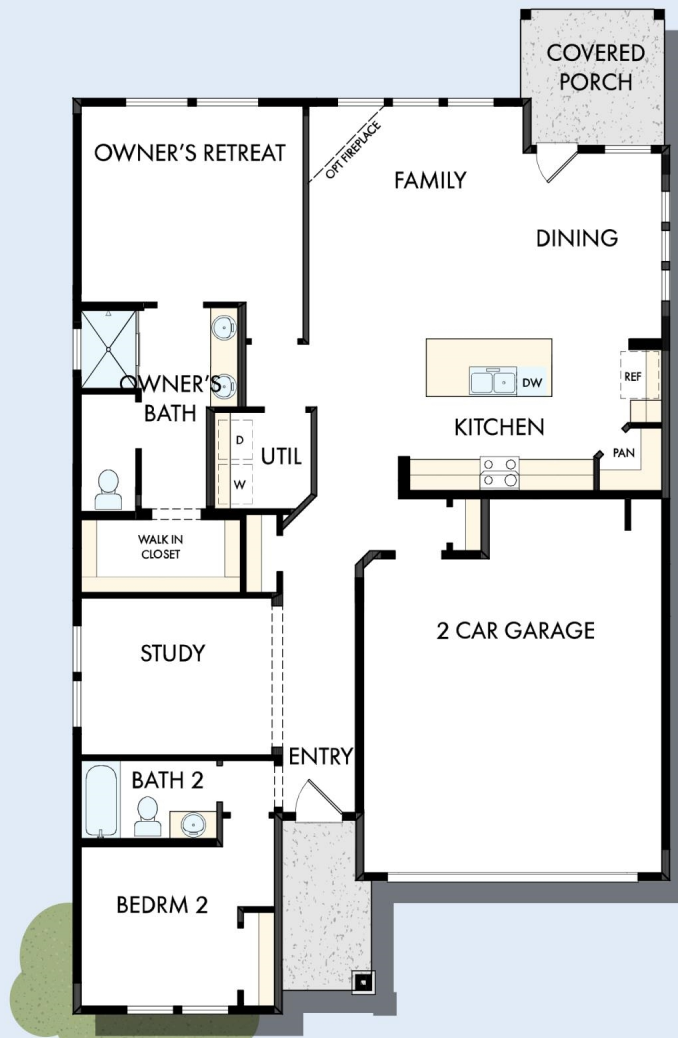
OPTIONAL FREE STANDING TUB WITH SEPARATE SHOWER AT OWNER'S BATH



OPTIONAL EXTENDED OWNER'S RETREAT



OPTIONAL BEDROOM 3 AT STUDY



FIRST FLOOR

B565 in 4679 ATL

For additional options, please visit [DavidWeekleyHomes.com](http://DavidWeekleyHomes.com)

11/20/2023

See a David Weekley Homes Sales Consultant for details. Prices, plans, dimensions, features, specifications, materials, and availability of homes or communities are subject to change without notice or obligation. Illustrations are artist's depictions only and may differ from completed improvements. Copyright © 2023 David Weekley Homes - All Rights Reserved. Atlanta, GA

**Encore**  
by David Weekley Homes

