

THE LINDLEY



Exterior A

2,394 - 2,397 sq. ft.

3 - 4 Bedrooms

2 Full Baths

2 Car Garage



Exterior B

Shane



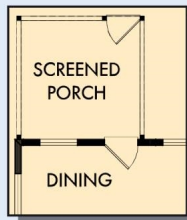
We're living our fairytale thanks to David Weekley

We can't say enough about the level of quality and care we received while building our home. Our builder was with us every step of the way to make sure our every need and desire was being met! The team truly went above and beyond at every turn to give us the home of our dreams! We will definitely recommend David Weekley to anyone looking to build a new home!

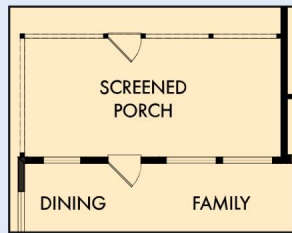
**David Weekley
Homes**

THE LINDLEY

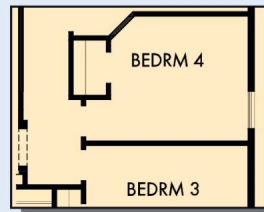
2,394 - 2,397 sq. ft. • 3 - 4 Bedrooms • 2 Full Baths • 2 Car Garage



OPTIONAL SCREENED PORCH AT DINING



OPTIONAL EXTENDED SCREENED PORCH AT DINING AND FAMILY



OPTIONAL BEDROOM 4 AT RETREAT



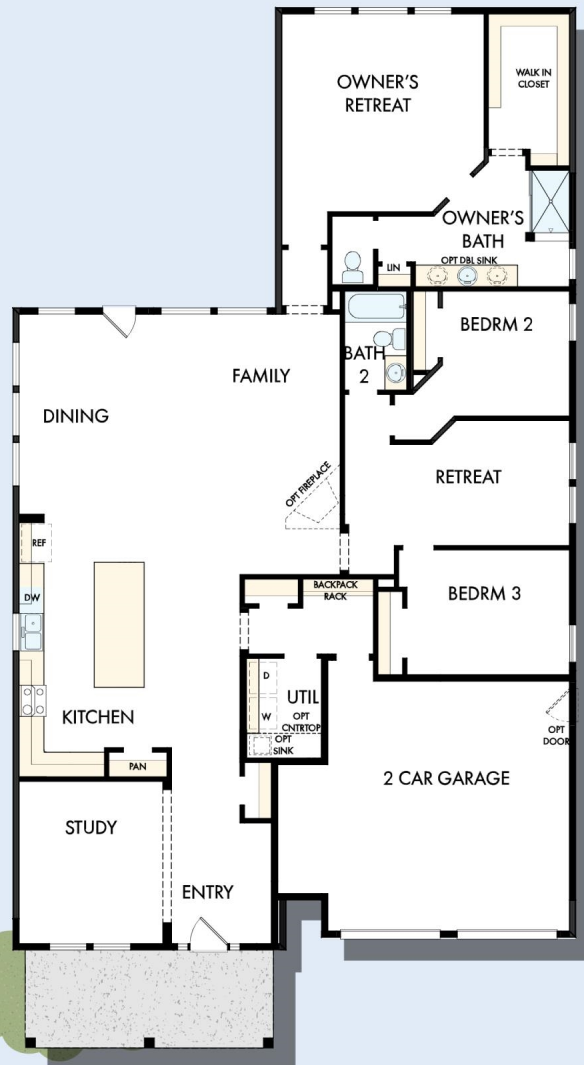
OPTIONAL EXTENDED BEDROOM 2 AND 3



OPTIONAL SEPARATE TUB AND SHOWER AT OWNER'S BATH



OPTIONAL SUPER SHOWER AT OWNER'S BATH



B225 in 4550 CSC

For additional options, please visit DavidWeekleyHomes.com

2/11/2022



See a David Weekley Homes Sales Consultant for details. Prices, plans, dimensions, features, specifications, materials, and availability of homes or communities are subject to change without notice or obligation. Illustrations are artist's depictions only and may differ from completed improvements. Copyright © 2022 David Weekley Homes - All Rights Reserved. Charleston, SC

DavidWeekleyHomes.com