

THE NETTLEMAN



6584DAI-C

Exterior C

3,301 - 3,619 sq. ft.

5 Bedrooms

4 Full Baths

2 Car Garage



6584DAL-D

Exterior D

Shane



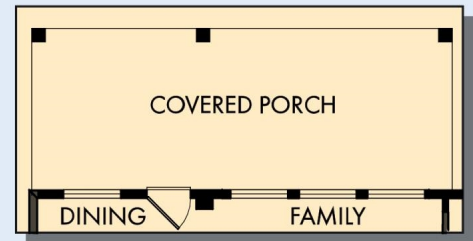
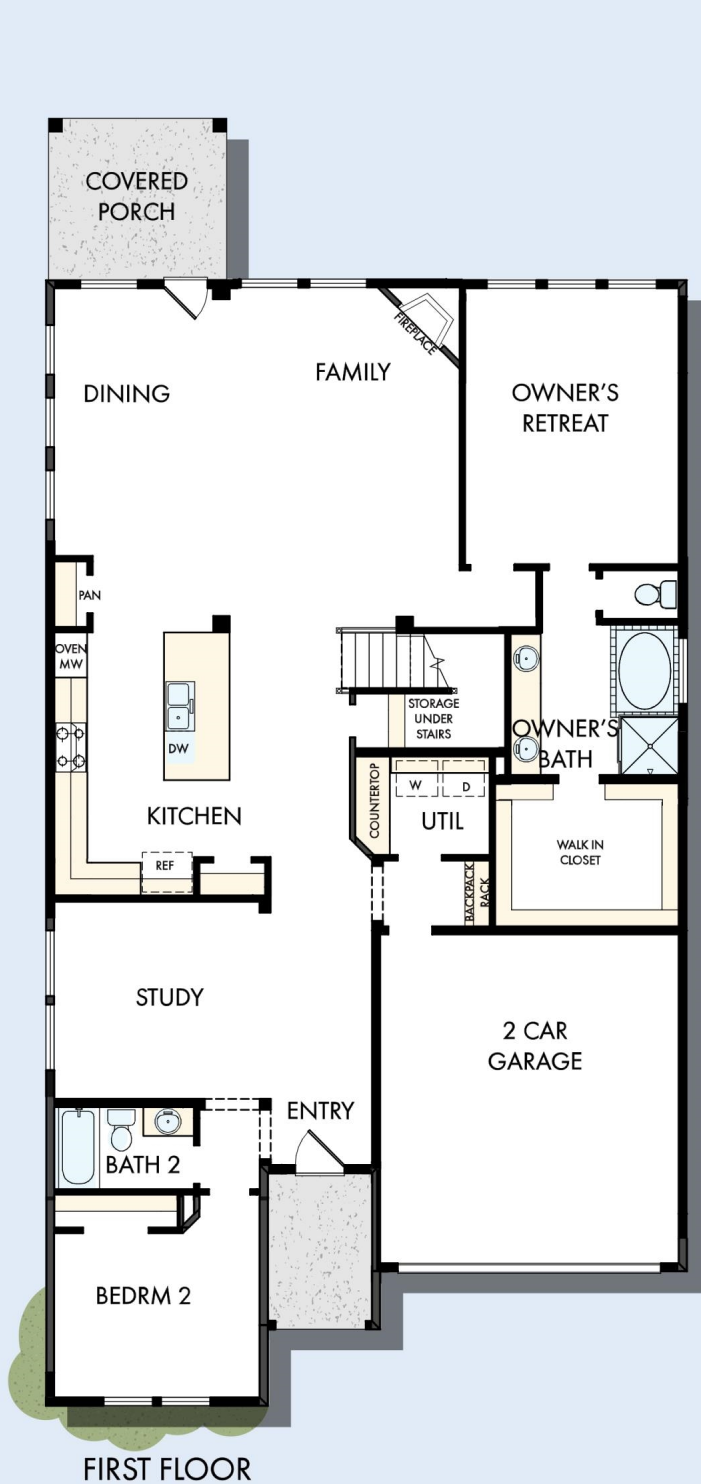
We're living our fairytale thanks to David Weekley

We can't say enough about the level of quality and care we received while building our home. Our builder was with us every step of the way to make sure our every need and desire was being met! The team truly went above and beyond at every turn to give us the home of our dreams! We will definitely recommend David Weekley to anyone looking to build a new home!

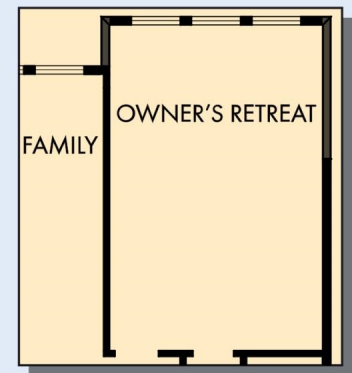
**David Weekley
Homes**

THE NETTLEMAN

3,301 - 3,619 sq. ft. • 5 Bedrooms • 4 Full Baths • 2 Car Garage



OPTIONAL EXTENDED COVERED PORCH

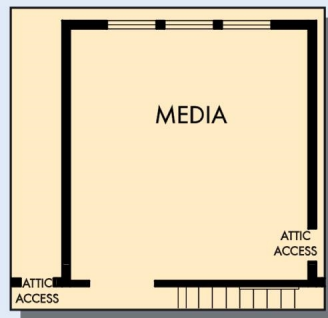


OPTIONAL EXTENDED
OWNER'S RETREAT



OPTIONAL SUPER
SHOWER AT
OWNER'S BATH

THE NETTLEMAN



OPTIONAL MEDIA AT REATREAT



SECOND FLOOR

For additional options, please visit DavidWeekleyHomes.com



See a David Weekley Homes Sales Consultant for details. Prices, plans, dimensions, features, specifications, materials, and availability of homes or communities are subject to change without notice or obligation. Illustrations are artist's depictions only and may differ from completed improvements. Copyright © 2020 David Weekley Homes - All Rights Reserved. Dallas/Ft. Worth, TX

DavidWeekleyHomes.com