

THE TWYMAN



Exterior A

2,502 sq. ft.

2 - 4 Bedrooms

2 - 4 Full Baths

0 - 1 Half Baths

2 Car Garage



Exterior B

Rich C.

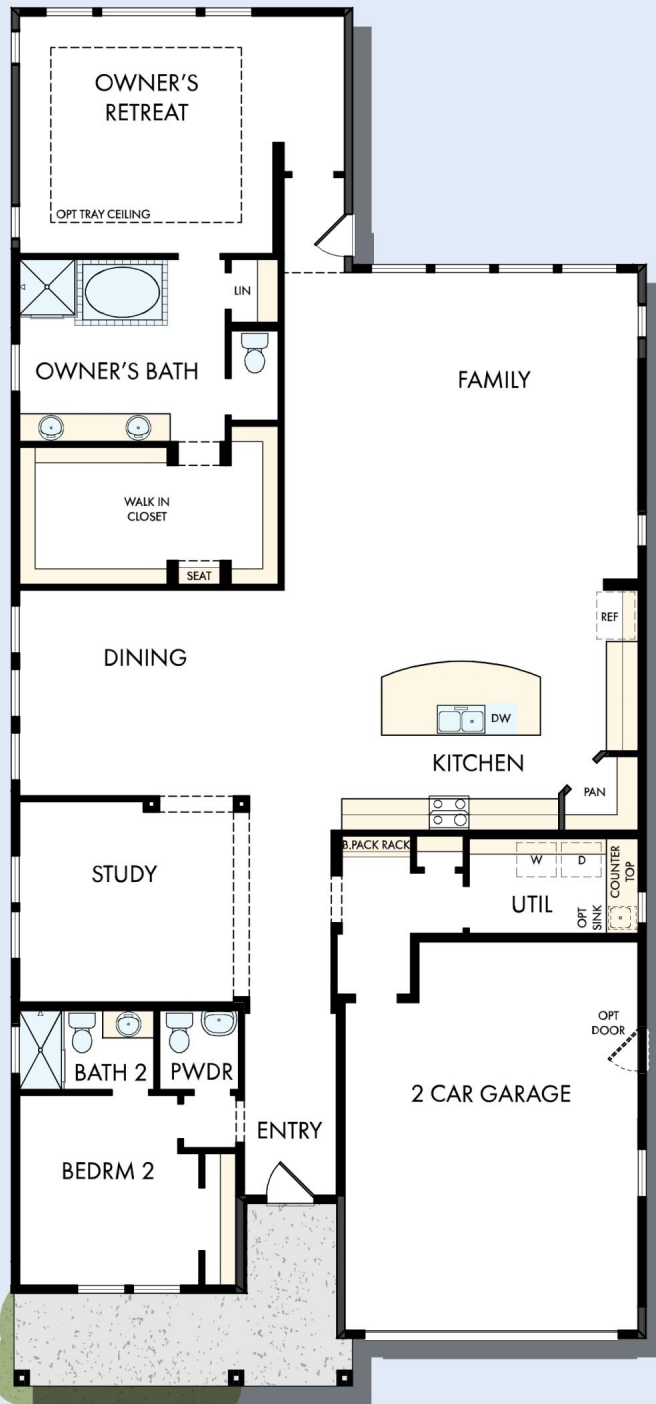


Wonderful Experience!

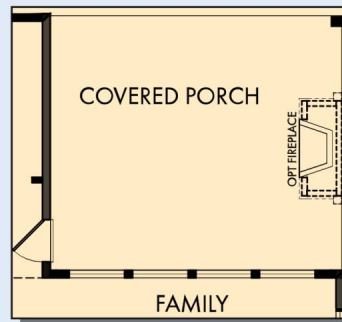
If there is anything that sets David Weekley apart from other builders it is their customer service. I felt like a member of the family from the first time I walked into the model, to when I received my keys and saw the wonderful housewarming presents that were left for me, up to the present when I see my salesman in the neighborhood. I felt like they really took the time to understand what I was looking for and then came through with my dream home. I would highly recommend David Weekley to anyone looking to buy and/or build a home.

Encore
by David Weekley Homes

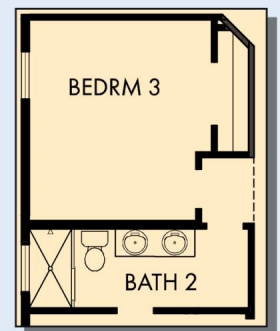
THE TWYMAN



FIRST FLOOR



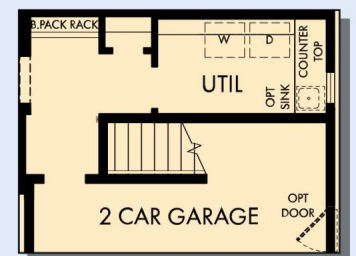
OPTIONAL EXTENDED COVERED PORCH AT FAMILY



OPTIONAL BEDROOM 3 AT STUDY



OPTIONAL SUPER SHOWER AT OWNER'S BATH



FIRST FLOOR WITH OPTIONAL SECOND FLOOR BONUS

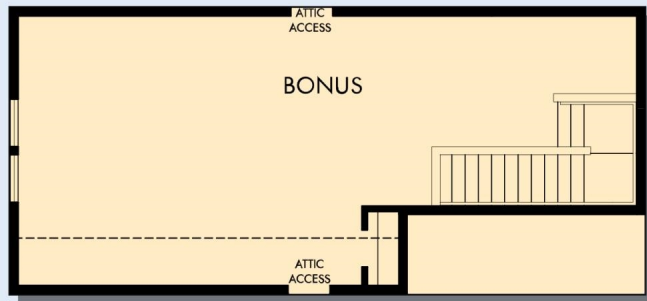
5587 in 4670 ATL

For additional options, please visit DavidWeekleyHomes.com

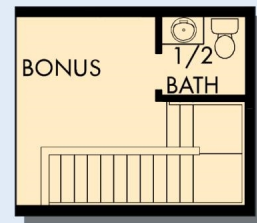
9/13/2019

Encore
by David Weekley Homes

THE TWYMAN



OPTIONAL BONUS



OPTIONAL HALF BATH
AT BONUS

For additional options, please visit DavidWeekleyHomes.com



See a David Weekley Homes Sales Consultant for details. Prices, plans, dimensions, features, specifications, materials, and availability of homes or communities are subject to change without notice or obligation. Illustrations are artist's depictions only and may differ from completed improvements. Copyright © 2019 David Weekley Homes - All Rights Reserved. Atlanta, GA

Encore
by David Weekley Homes