

# THE AXEL



Exterior E



Exterior F

2,815 - 2,968 sq. ft.

4 Bedrooms

3 Full Baths

1 Half Bath

2 Car Garage

## Jordan



### Greatly exceeded every expectation! A+++!

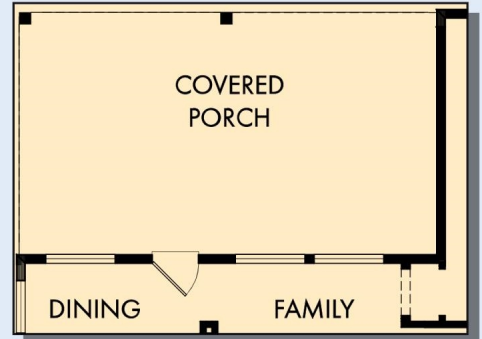
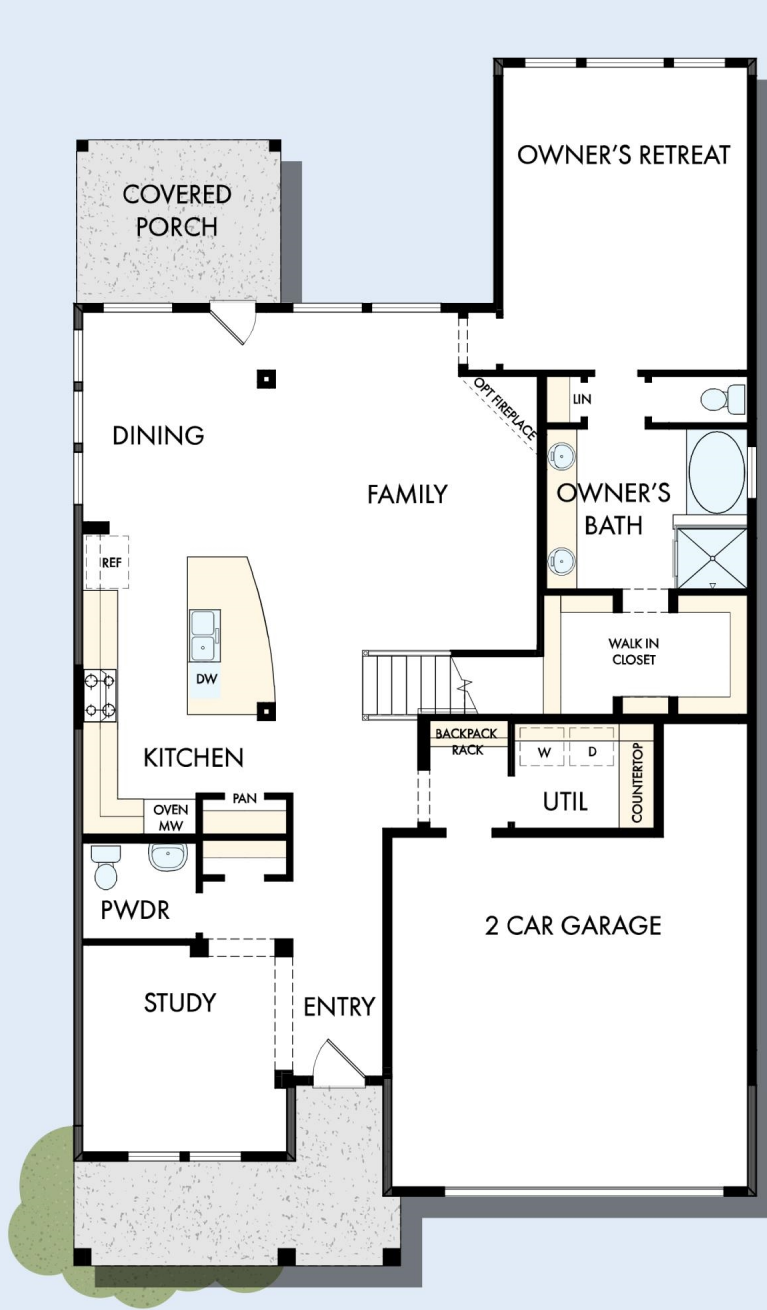
The entire experience was excellent from the first day I showed up to look at houses. The whole team came together to provide a truly quality house that I will be living in for years to come. Kajal helped me purchase the house and coordinated all meetings. She was very cheerful and professional at all times and I could tell that she cared about her clients and my family. Jeff and Robbie were builders that always went the extra mile to ensure total customer satisfaction. Jeff was very helpful and I am grateful to his management and know that I will be moving in to a house that is built right with a great attention to detail... Ashley also provided Kajal with assistance whenever Kajal was not available. I could not be happier with everyone involved in building this house. David Weekley is a great company and I would enthusiastically recommend them to others needing a quality house built in the future. Thank you for such a great experience and I hope that this company continues to grow.

David Weekley  
Homes

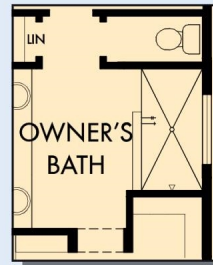


# THE AXEL

2,815 - 2,968 sq. ft. • 4 Bedrooms • 3 Full Baths • 1 Half Bath • 2 Car Garage



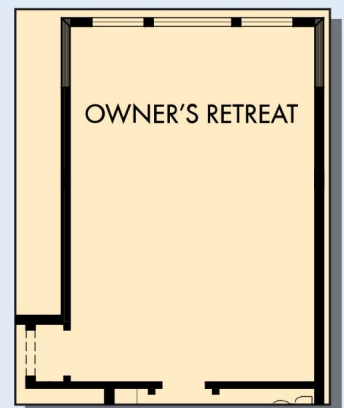
OPTIONAL EXTENDED COVERED PORCH



OPTIONAL SUPER SHOWER AT OWNER'S BATH



OPTIONAL DROP-IN TUB WITH SEPARATE SHOWER AT OWNER'S BATH



OPTIONAL EXTENDED OWNER'S RETREAT

# THE AXEL



For additional options, please visit [DavidWeekleyHomes.com](http://DavidWeekleyHomes.com)

See a David Weekley Homes Sales Consultant for details. Prices, plans, dimensions, features, specifications, materials, and availability of homes or communities are subject to change without notice or obligation. Illustrations are artist's depictions only and may differ from completed improvements. Copyright © 2024 David Weekley Homes - All Rights Reserved. Dallas/Ft. Worth, TX

**DavidWeekleyHomes.com**

