

THE HOWELL



Exterior A

3,646 - 5,637 sq. ft.

4 - 5 Bedrooms

4 - 5 Full Baths

1 Half Bath

3 Car Garage



Exterior B

Rich C.



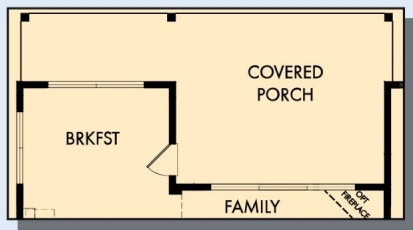
Wonderful Experience!

If there is anything that sets David Weekley apart from other builders it is their customer service. I felt like a member of the family from the first time I walked into the model, to when I received my keys and saw the wonderful housewarming presents that were left for me, up to the present when I see my salesman in the neighborhood. I felt like they really took the time to understand what I was looking for and then came through with my dream home. I would highly recommend David Weekley to anyone looking to buy and/or build a home.

**David Weekley
Homes**

THE HOWELL

3,646 - 5,637 sq. ft. • 4 - 5 Bedrooms • 4 - 5 Full Baths • 1 Half Bath • 3 Car Garage



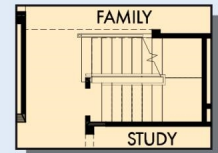
OPTIONAL EXTENDED COVERED PORCH
AT FAMILY AND BREAKFAST



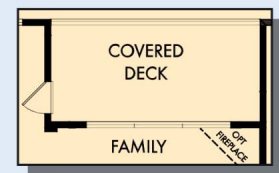
OPTIONAL FREE-
STANDING TUB WITH
SEPARATE SHOWER AT
OWNER'S BATH



OPTIONAL SUPER
SHOWER AT OWNER'S
BATH



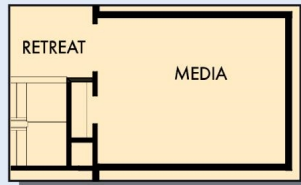
FIRST FLOOR WITH
OPTIONAL BASEMENT



COVERED DECK WITH
OPTIONAL BASEMENT



THE HOWELL



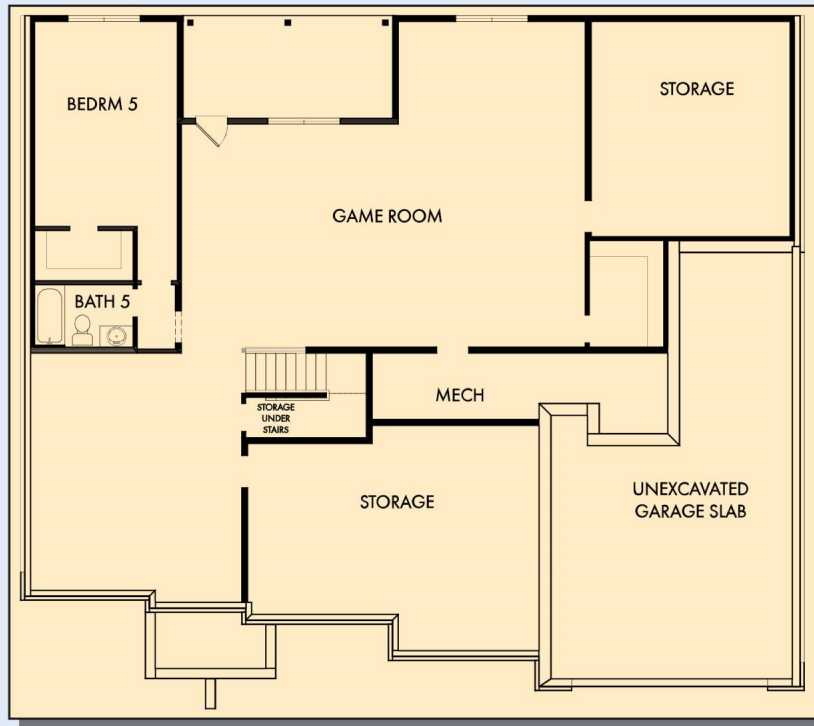
OPTIONAL MEDIA AT RETREAT



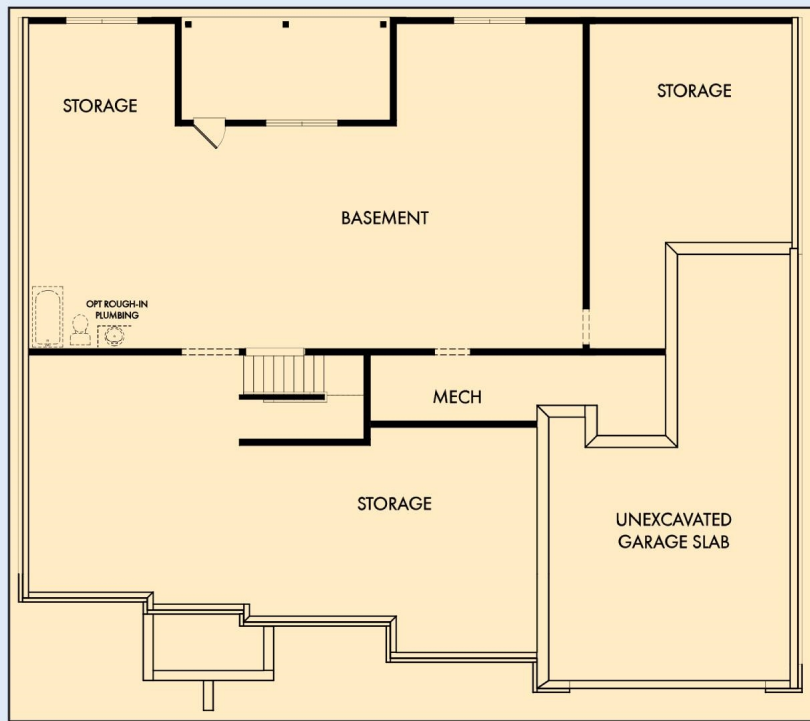
SECOND FLOOR

For additional options, please visit DavidWeekleyHomes.com

THE HOWELL



OPTIONAL GAME ROOM WITH BEDROOM 5 AND BATH 5 AT BASEMENT



OPTIONAL BASEMENT

For additional options, please visit DavidWeekleyHomes.com



See a David Weekley Homes Sales Consultant for details. Prices, plans, dimensions, features, specifications, materials, and availability of homes or communities are subject to change without notice or obligation. Illustrations are artist's depictions only and may differ from completed improvements. Copyright © 2023 David Weekley Homes - All Rights Reserved. Atlanta, GA

DavidWeekleyHomes.com