

# THE PETUNIA



Exterior A

3,225 - 3,234 sq. ft.

4 - 5 Bedrooms

2 - 3 Full Baths

1 Half Bath

2 - 3 Car Garage



Exterior B

## Greg and Jane



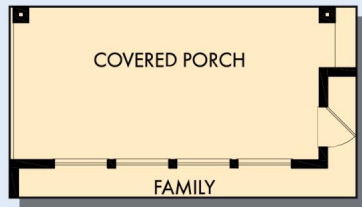
### Exceptional service and experience!

We have been fortunate enough to build several new homes and this was by far the best experience that we've encountered. We actually debated whether or not we wanted to go through the home building process again or simply purchase a pre-owned home or a finished new home. So pleased we built! Our Weekley team (sales associate, design consultant and builder) was very professional, courteous, attentive, responsive and pro-active from beginning to end. They've all become our adopted kids! Great overall experience!

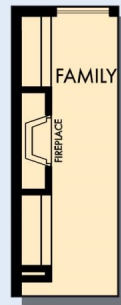
**David Weekley  
Homes**

# THE PETUNIA

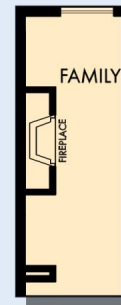
3,225 - 3,234 sq. ft. • 4 - 5 Bedrooms • 2 - 3 Full Baths • 1 Half Bath • 2 - 3 Car Garage



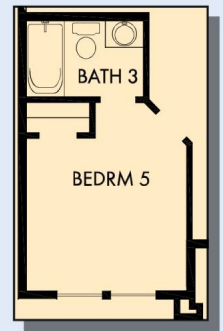
OPTIONAL EXTENDED COVERED PORCH



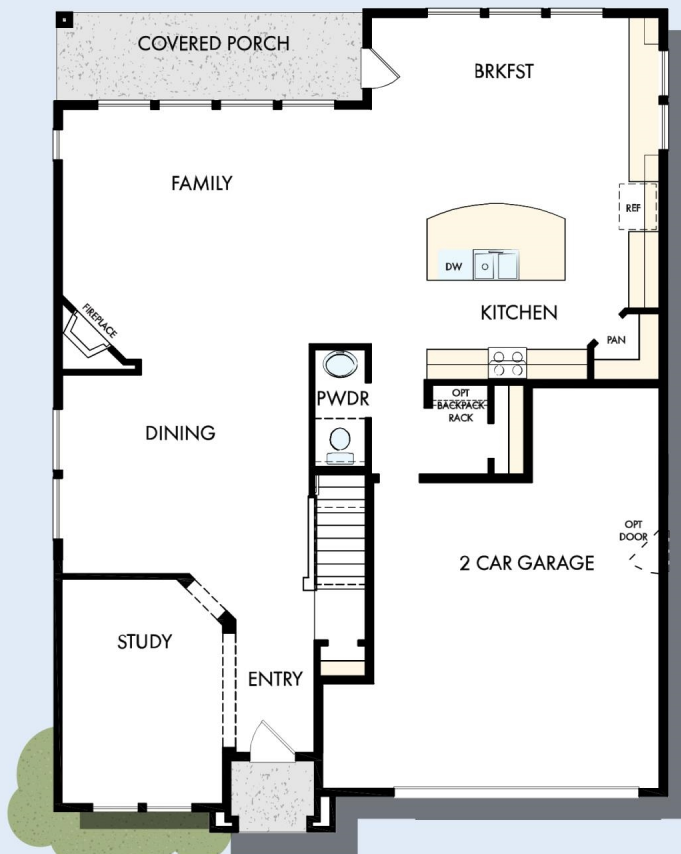
OPTIONAL WALL  
FIREPLACE WITH  
BUILT IN CABINETS  
AT FAMILY



OPTIONAL WALL  
FIREPLACE AT FAMILY



OPTIONAL BEDROOM  
5 WITH BATH 3 AT STUDY



FIRST FLOOR

7787 in 6820 POR

For additional options, please visit [DavidWeekleyHomes.com](http://DavidWeekleyHomes.com)

11/17/2021

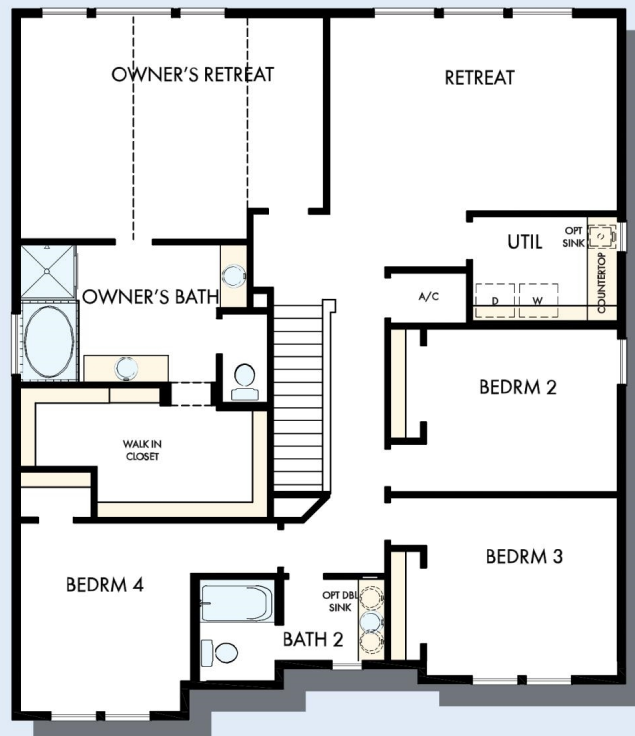
**DavidWeekleyHomes.com**



# THE PETUNIA



OPTIONAL SUPER SHOWER  
AT OWNER'S BATH



SECOND FLOOR

For additional options, please visit [DavidWeekleyHomes.com](http://DavidWeekleyHomes.com)



See a David Weekley Homes Sales Consultant for details.  
Prices, plans, dimensions, features, specifications, materials,  
and availability of homes or communities are subject to  
change without notice or obligation. Illustrations are artist's  
depictions only and may differ from completed improvements.  
Copyright © 2021 David Weekley Homes - All Rights Reserved.  
POR, OR

## DavidWeekleyHomes.com