

THE LATIMER



Exterior A

3,378 - 4,349 sq. ft.

4 - 5 Bedrooms

3 - 5 Full Baths

1 - 2 Half Baths

3 Car Garage



Exterior D

Meg S.



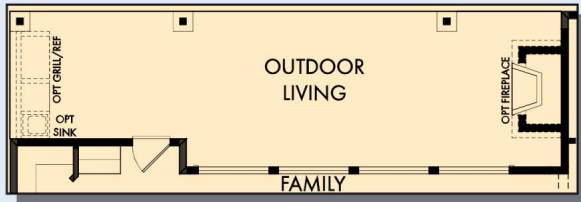
Truly treated us like family!!!

We enjoyed every part of the home building process. It was amazing! Our builder was always keeping us informed and really went above and beyond to ensure that we love our home. Our warranty rep is outstanding and continues to take care of our every need. I couldn't have asked for a better experience. Our builder and warranty rep continue to be there for us as a family. While our interactions with the DW Family have been highly professional, we are also lucky enough to be able to call them some of our greatest friends! Wouldn't change a thing!

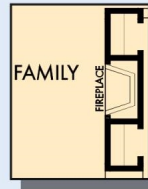
**David Weekley
Homes**

THE LATIMER

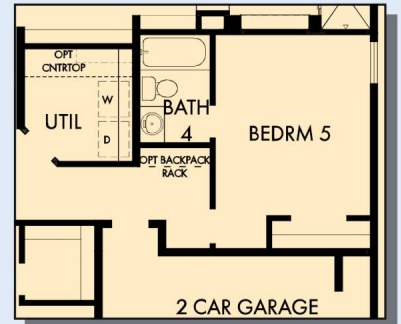
3,378 - 4,349 sq. ft. • 4 - 5 Bedrooms • 3 - 5 Full Baths • 1 - 2 Half Baths • 3 Car Garage



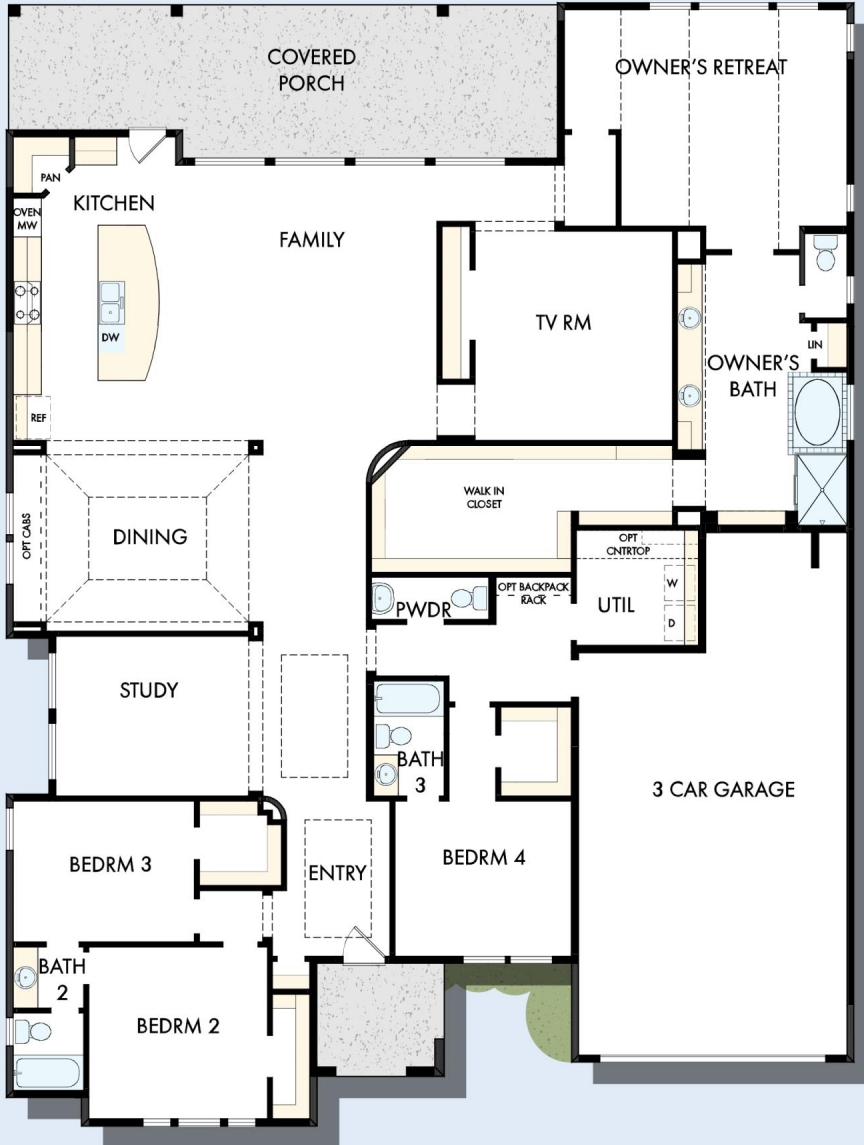
OPTIONAL OUTDOOR LIVING



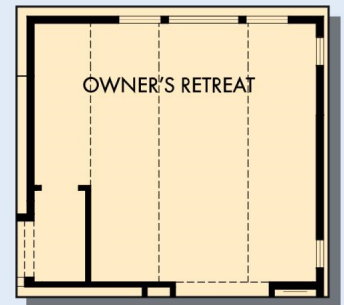
OPTIONAL WALL FIREPLACE AT FAMILY



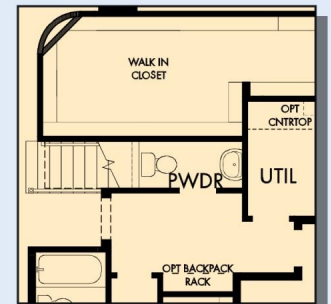
OPTIONAL BEDROOM 5 WITH BATH 4 AT GARAGE



FIRST FLOOR



OPTIONAL EXTENDED OWNER'S RETREAT

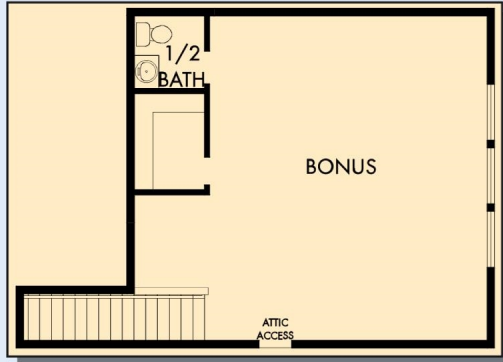


FIRST FLOOR WITH OPTIONAL SECOND FLOOR BONUS

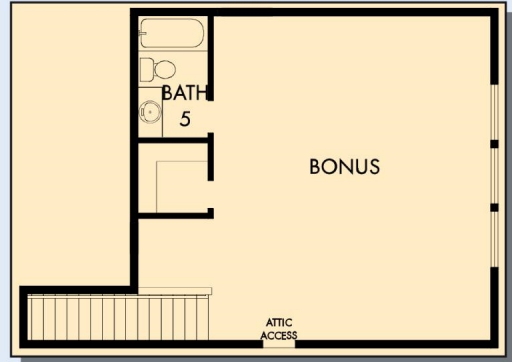


OPTIONAL SUPER SHOWER AT OWNER'S BATH

THE LATIMER



OPTIONAL SECOND FLOOR BONUS WITH HALF BATH



OPTIONAL SECOND FLOOR BONUS WITH BATH 5

For additional options, please visit DavidWeekleyHomes.com

See a David Weekley Homes Sales Consultant for details. Prices, plans, dimensions, features, specifications, materials, and availability of homes or communities are subject to change without notice or obligation. Illustrations are artist's depictions only and may differ from completed improvements. Copyright © 2023 David Weekley Homes - All Rights Reserved. Austin, TX

DavidWeekleyHomes.com

