

THE CLIPPER



Exterior A

1,630 sq. ft.

3 - 4 Bedrooms

2 - 3 Full Baths

1 Half Bath

2 Car Garage



Exterior B

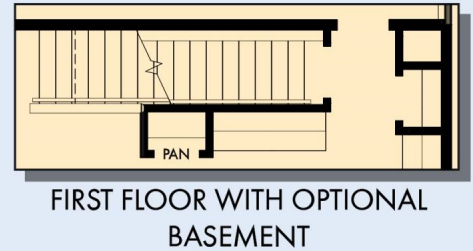
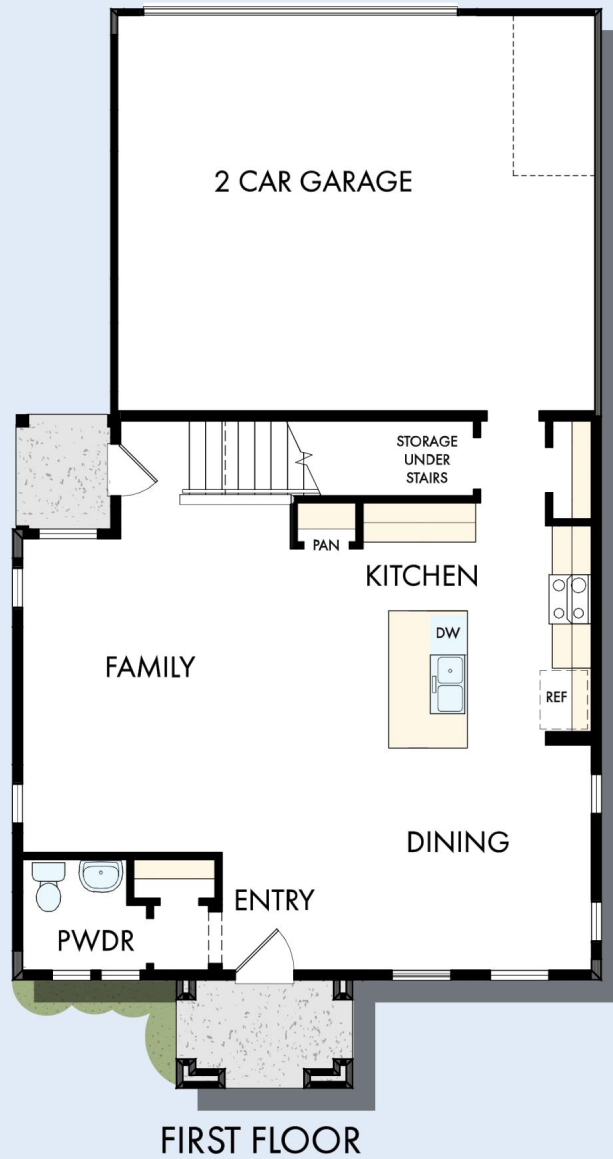


Exterior C

David Weekley
Homes

THE CLIPPER

1,630 sq. ft. • 3 - 4 Bedrooms • 2 - 3 Full Baths • 1 Half Bath • 2 Car Garage



B151 in 5324 SLC

For additional options, please visit DavidWeekleyHomes.com

9/30/2020

DavidWeekleyHomes.com

THE CLIPPER

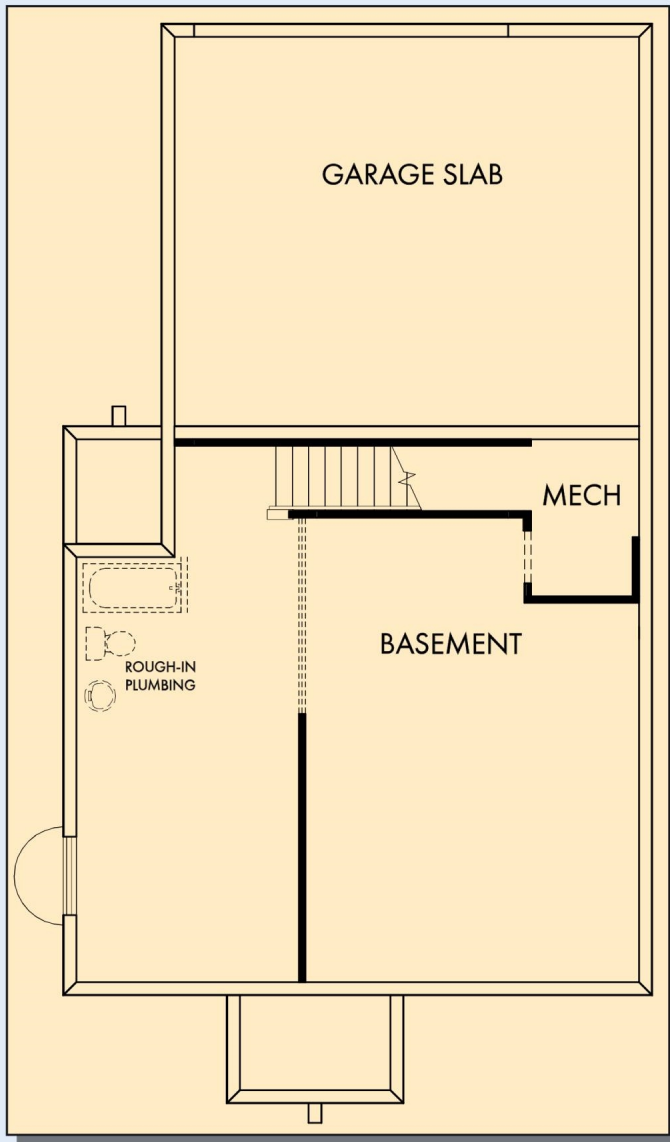


SECOND FLOOR

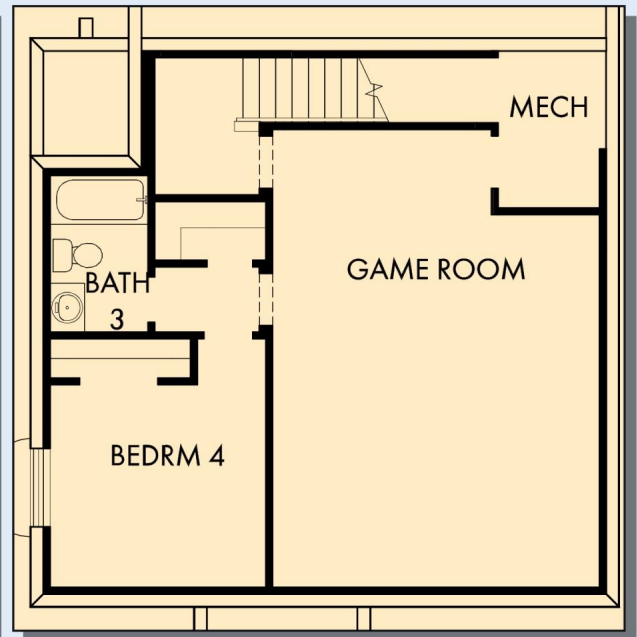
For additional options, please visit DavidWeekleyHomes.com

DavidWeekleyHomes.com

THE CLIPPER



OPTIONAL BASEMENT



OPTIONAL GAMEROOM WITH BEDROOM 4
AND BATH 3 AT BASEMENT

For additional options, please visit DavidWeekleyHomes.com

DavidWeekleyHomes.com



See a David Weekley Homes Sales Consultant for details.
Prices, plans, dimensions, features, specifications, materials,
and availability of homes or communities are subject to
change without notice or obligation. Illustrations are artist's
depictions only and may differ from completed improvements.
Copyright © 2020 David Weekley Homes - All Rights Reserved.
Salt Lake City, UT