

# THE ANTHEM



Exterior A



Exterior B

2,489 - 3,369 sq. ft.

3 - 4 Bedrooms

2 - 3 Full Baths

1 Half Bath

2 - 3 Car Garage

**Shane**



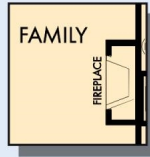
**We're living our fairytale thanks to David Weekley**

We can't say enough about the level of quality and care we received while building our home. Our builder was with us every step of the way to make sure our every need and desire was being met! The team truly went above and beyond at every turn to give us the home of our dreams! We will definitely recommend David Weekley to anyone looking to build a new home!

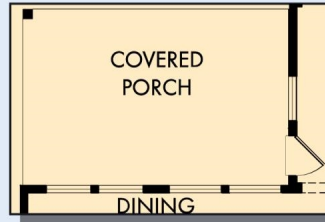
**David Weekley  
Homes**

# THE ANTHEM

2,489 - 3,369 sq. ft. • 3 - 4 Bedrooms • 2 - 3 Full Baths • 1 Half Bath • 2 - 3 Car Garage



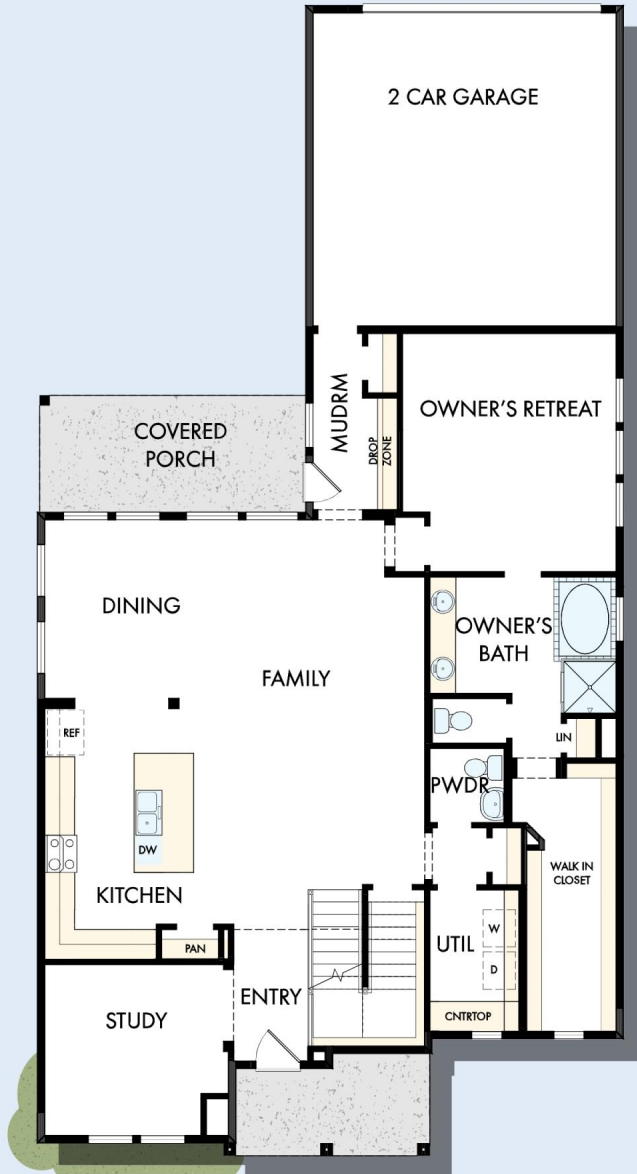
OPTIONAL WALL FIREPLACE AT FAMILY



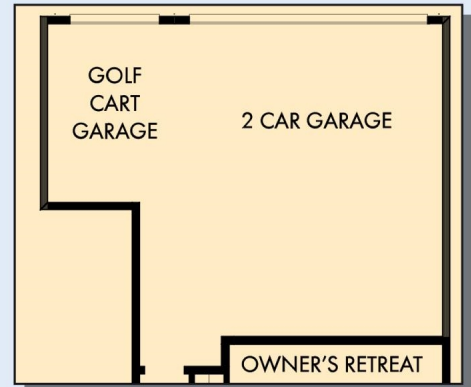
OPTIONAL EXTENDED COVERED PORCH AT DINING



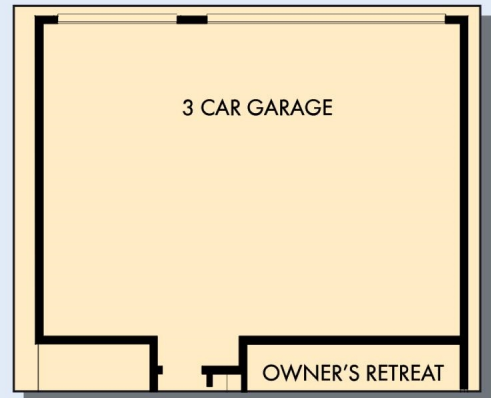
OPTIONAL SUPER SHOWER AT OWNER'S BATH



FIRST FLOOR



OPTIONAL GOLF CART GARAGE



OPTIONAL 3 CAR GARAGE

# THE ANTHEM



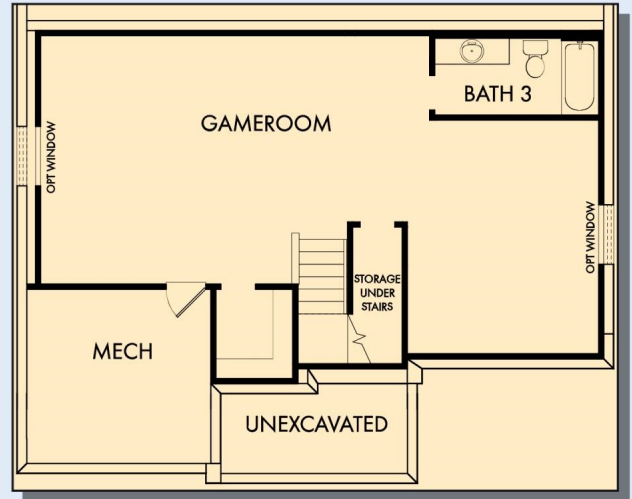
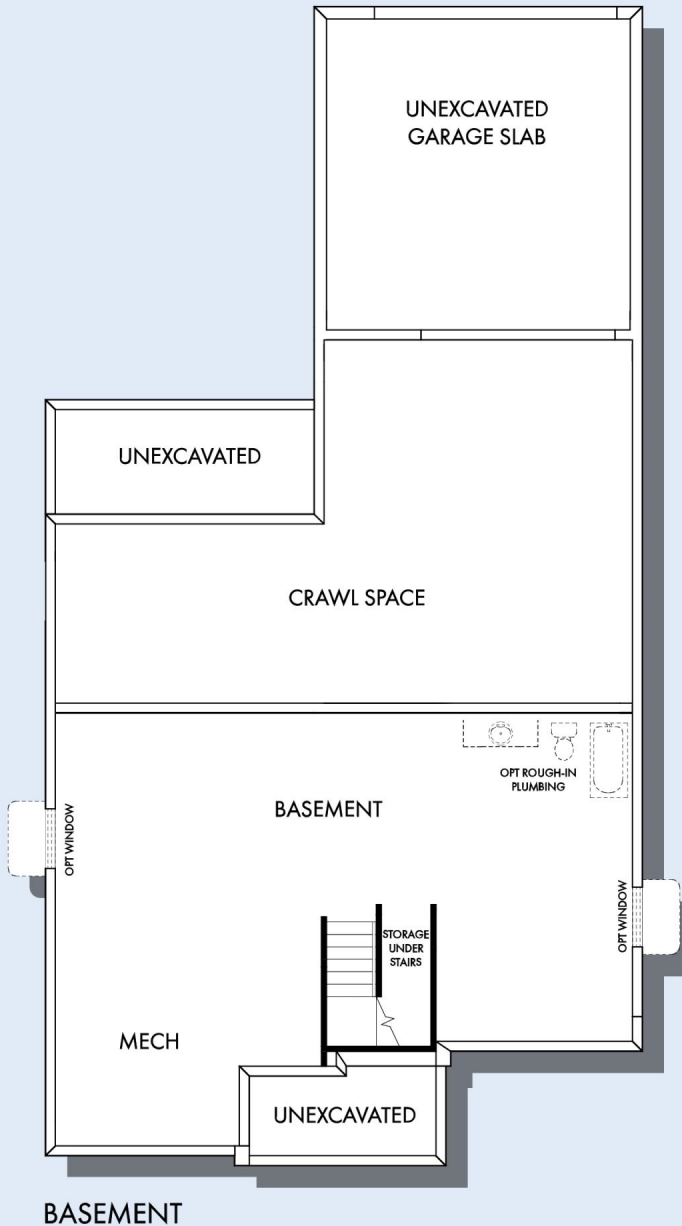
SECOND FLOOR

For additional options, please visit [DavidWeekleyHomes.com](http://DavidWeekleyHomes.com)

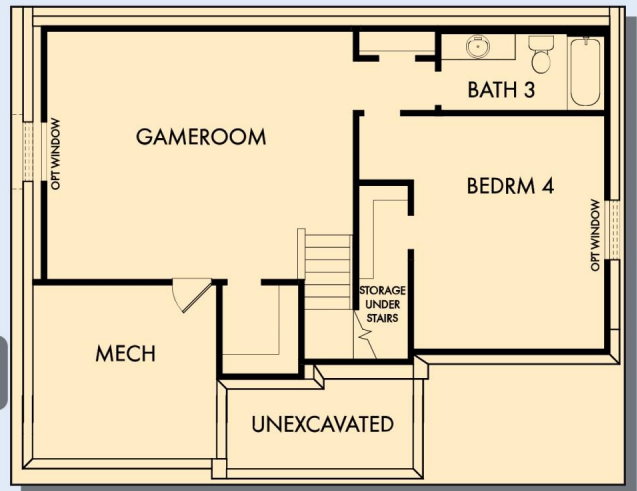
**DavidWeekleyHomes.com**



# THE ANTHEM



OPTIONAL GAMEROOM WITH BATH 3 AT BASEMENT



OPTIONAL GAMEROOM WITH BEDROOM 4 AND BATH 3 AT BASEMENT

For additional options, please visit [DavidWeekleyHomes.com](http://DavidWeekleyHomes.com)

See a David Weekley Homes Sales Consultant for details. Prices, plans, dimensions, features, specifications, materials, and availability of homes or communities are subject to change without notice or obligation. Illustrations are artist's depictions only and may differ from completed improvements. Copyright © 2023 David Weekley Homes - All Rights Reserved. Indianapolis, IN

**DavidWeekleyHomes.com**

