

# THE RYMER



Exterior E

2,793 - 3,398 sq. ft.

4 Bedrooms

3 Full Baths

2 - 3 Car Garage



Exterior D



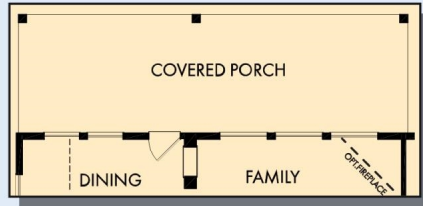
Exterior F

David Weekley  
Homes

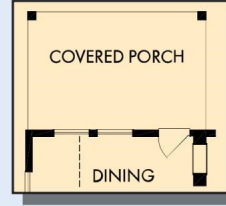


# THE RYMER

2,793 - 3,398 sq. ft. • 4 Bedrooms • 3 Full Baths • 2 - 3 Car Garage



OPTIONAL EXTENDED COVERED PORCH AT DINING AND FAMILY



OPTIONAL COVERED PORCH AT DINING



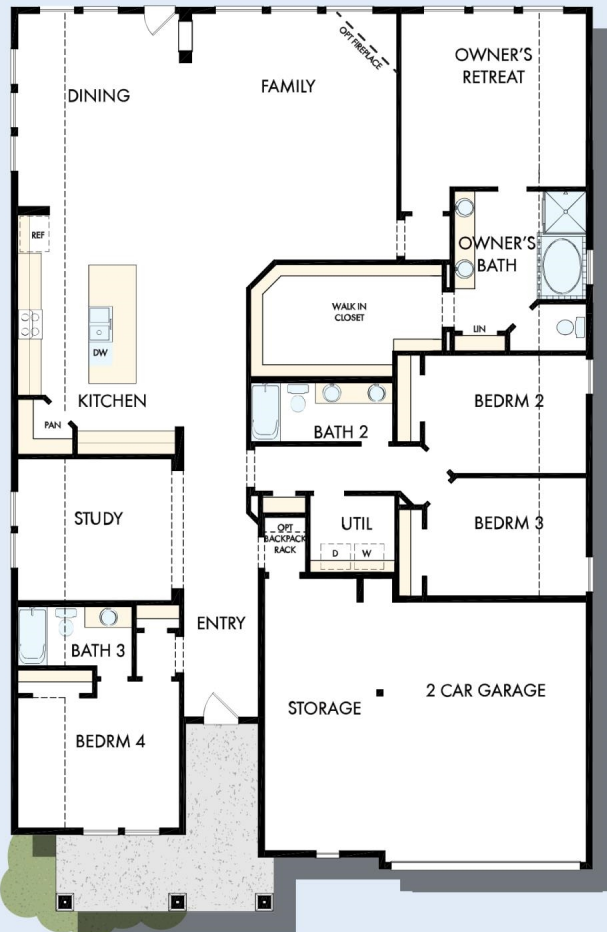
OPTIONAL EXTENDED OWNER'S RETREAT



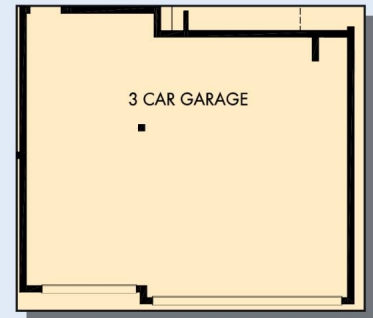
OPTIONAL SUPER SHOWER AT OWNER'S BATH



FIRST FLOOR WITH OPTIONAL SECOND FLOOR BONUS



FIRST FLOOR



OPTIONAL 3 CAR GARAGE

# THE RYMER



OPTIONAL SECOND FLOOR  
BONUS WITH BATH 4

For additional options, please visit [DavidWeekleyHomes.com](http://DavidWeekleyHomes.com)

See a David Weekley Homes Sales Consultant for details. Prices, plans, dimensions, features, specifications, materials, and availability of homes or communities are subject to change without notice or obligation. Illustrations are artist's depictions only and may differ from completed improvements. Copyright © 2023 David Weekley Homes - All Rights Reserved. San Antonio, TX



**DavidWeekleyHomes.com**