

THE PENHURST



Exterior B



Exterior C

3,062 - 3,077 sq. ft.

4 - 5 Bedrooms

3 - 4 Full Baths

0 - 1 Half Baths

2 Car Garage

Sandra A.



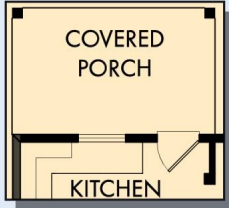
Best Builder Around

We have loved DW homes ever since our mother bought one. The quality of their work, attention to detail and willingness to respond to questions is top notch. The biggest thing we love about DW is their focus on customer service. They are not your typical builder who meets with you to get a check and forgets about you till walk thru. They are your partner through the entire process. Each step of the way they know they are building your dream house and really treat you like family. I would recommend them hands down. My husband sells real estate and has dealt with numerous builders around town. He always directs his clients to DW and signs their praises.

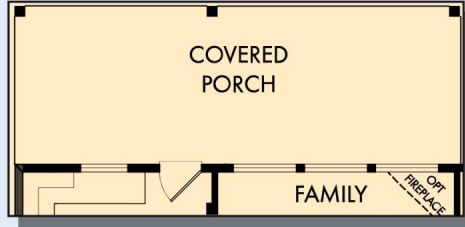
**David Weekley
Homes**

THE PENHURST

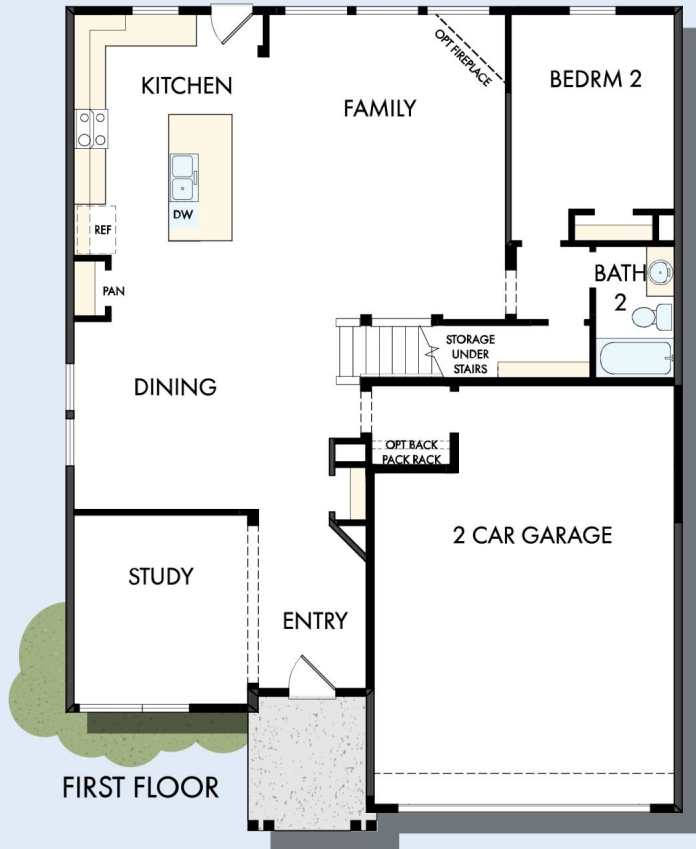
3,062 - 3,077 sq. ft. • 4 - 5 Bedrooms • 3 - 4 Full Baths • 0 - 1 Half Baths • 2 Car Garage



OPTIONAL COVERED PORCH AT KITCHEN



OPTIONAL EXTENDED COVERED PORCH AT KITCHEN AND FAMILY



A205 in 4145 NAS

For additional options, please visit DavidWeekleyHomes.com

1/11/2024

DavidWeekleyHomes.com

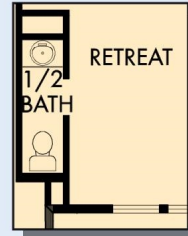
THE PENHURST



OPTIONAL SUPER SHOWER AT OWNER'S BATH



OPTIONAL FREE-STANDING TUB WITH SEPARATE SHOWER AT OWNER'S BATH



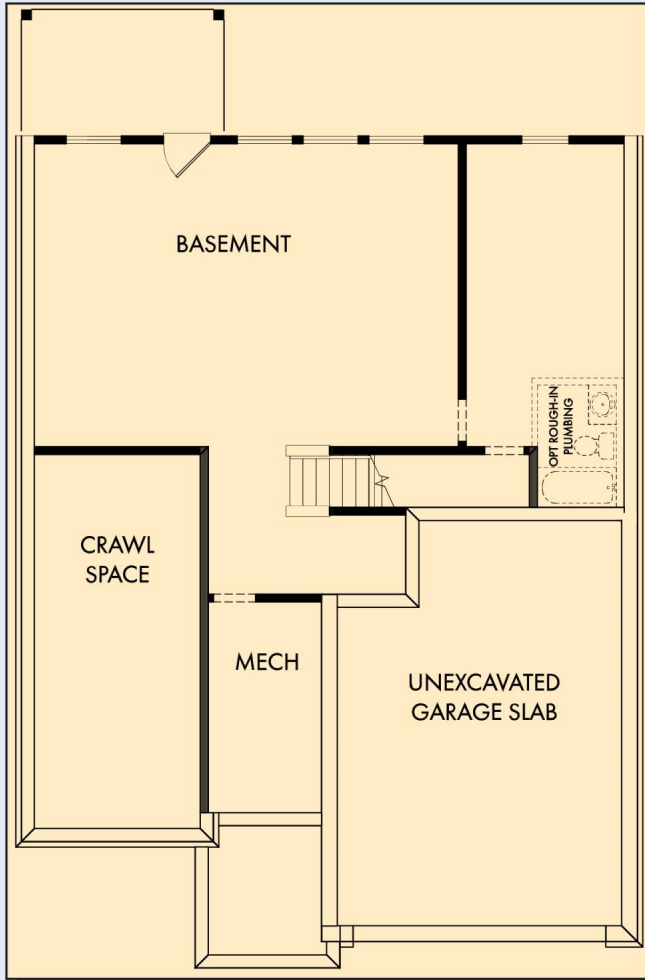
OPTIONAL HALF BATH AT RETREAT



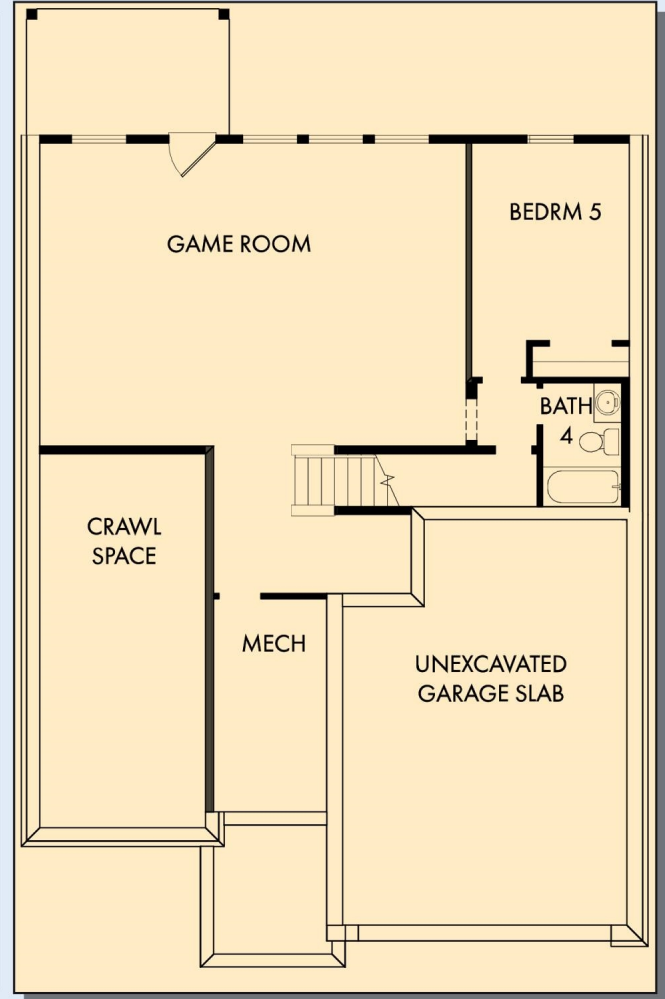
SECOND FLOOR

For additional options, please visit DavidWeekleyHomes.com

THE PENHURST



OPTIONAL BASEMENT



OPTIONAL GAME ROOM WITH BEDROOM 5 AND BATH 4

For additional options, please visit DavidWeekleyHomes.com

See a David Weekley Homes Sales Consultant for details. Prices, plans, dimensions, features, specifications, materials, and availability of homes or communities are subject to change without notice or obligation. Illustrations are artist's depictions only and may differ from completed improvements. Copyright © 2024 David Weekley Homes - All Rights Reserved. Nashville, TN

DavidWeekleyHomes.com

