

THE MARY VIRGINIA



Exterior F

2,022 - 2,043 sq. ft.

3 - 5 Bedrooms

2 - 3 Full Baths

0 - 1 Half Baths

2 Car Garage



Exterior G

Crystal W.



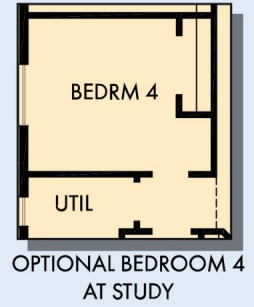
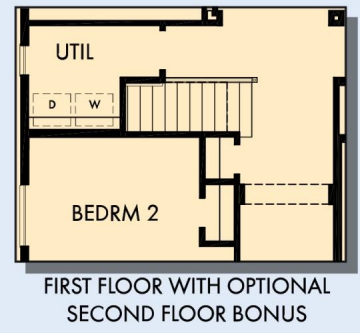
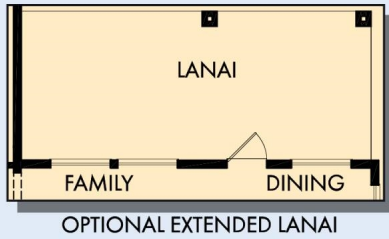
Welcome Home

My DWHome's experience has been truly 5-stars! From a floorplan concept, reserving a lot filled with dirt, the homebuilding project, to "Welcome Home", the entire process has been amazing. The team provided regular feedback and were always available to address questions and concerns. I was sold on the quality features. The entire team's availability and service has been exceptional before and after closing. Looking forward to enjoying our new home and neighbors for many years to come!

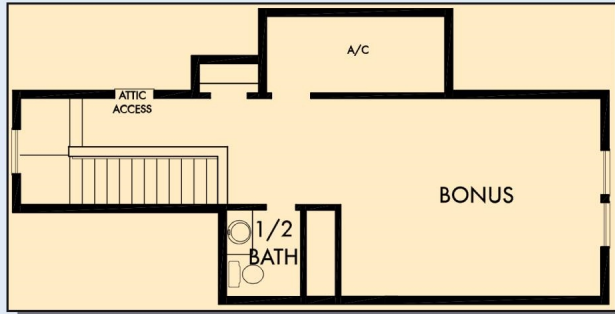
**David Weekley
Homes**

THE MARY VIRGINIA

2,022 - 2,043 sq. ft. • 3 - 5 Bedrooms • 2 - 3 Full Baths • 0 - 1 Half Baths • 2 Car Garage



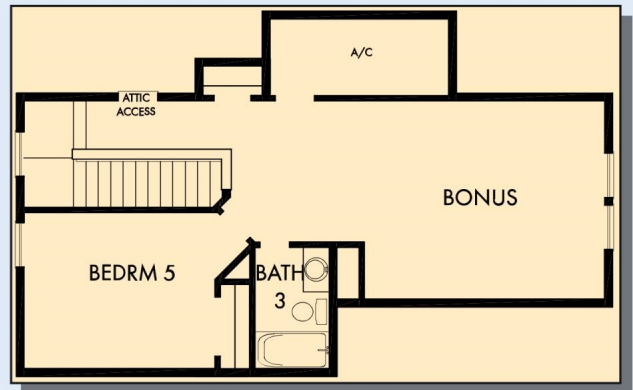
THE MARY VIRGINIA



OPTIONAL SECOND FLOOR BONUS WITH HALF BATH



OPTIONAL SECOND FLOOR BONUS WITH BATH 3



OPTIONAL SECOND FLOOR BONUS WITH
BEDROOM 5 AND BATH 3

For additional options, please visit DavidWeekleyHomes.com

See a David Weekley Homes Sales Consultant for details. Prices, plans, dimensions, features, specifications, materials, and availability of homes or communities are subject to change without notice or obligation. Illustrations are artist's depictions only and may differ from completed improvements. Copyright © 2024 David Weekley Homes - All Rights Reserved. Jacksonville, FL

DavidWeekleyHomes.com

