

THE GAMMILL



5889 IND - A

Exterior A



5889 IND - B

Exterior B

2,000 - 3,298 sq. ft.

2 - 5 Bedrooms

2 - 4 Full Baths

1 Half Bath

2 - 3 Car Garage

Shane



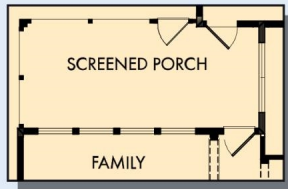
We're living our fairytale thanks to David Weekley

We can't say enough about the level of quality and care we received while building our home. Our builder was with us every step of the way to make sure our every need and desire was being met! The team truly went above and beyond at every turn to give us the home of our dreams! We will definitely recommend David Weekley to anyone looking to build a new home!

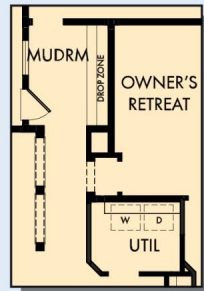
**David Weekley
Homes**

THE GAMMILL

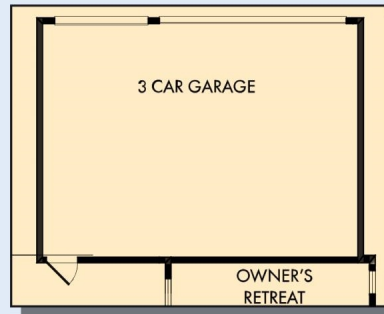
2,000 - 3,298 sq. ft. • 2 - 5 Bedrooms • 2 - 4 Full Baths • 1 Half Bath • 2 - 3 Car Garage



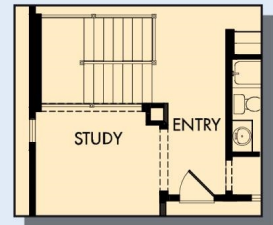
OPTIONAL SCREENED PORCH
AT FAMILY



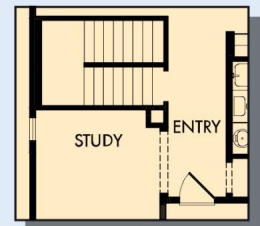
OPTIONAL MUD ROOM
AT OWNER'S RETREAT



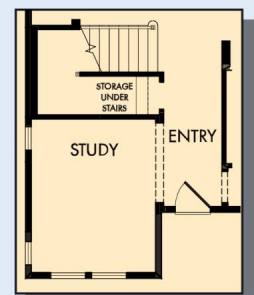
OPTIONAL 3 CAR GARAGE



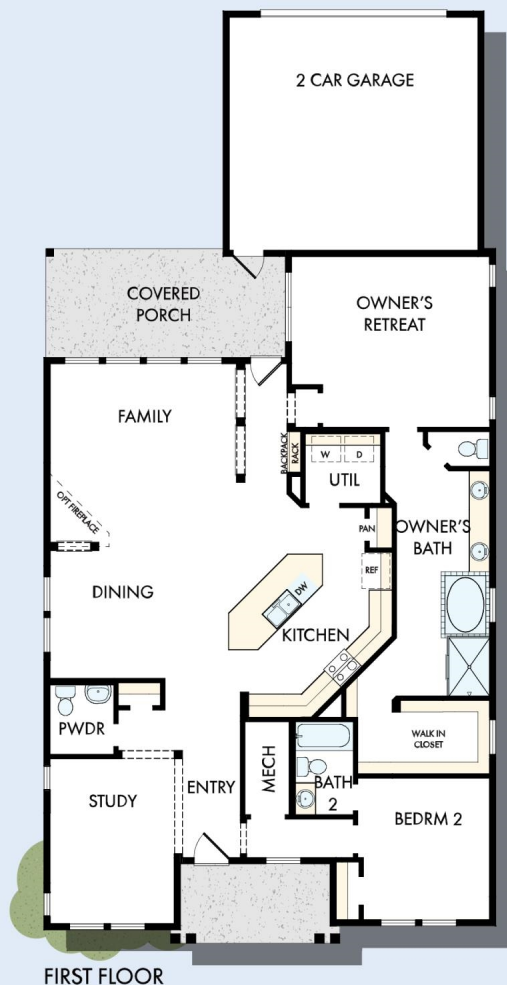
FIRST FLOOR WITH OPTIONAL
FINISH BASEMENT



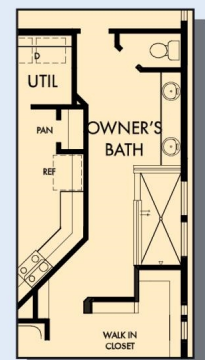
FIRST FLOOR WITH
UNFINISHED BASEMNT



FIRST FLOOR WITH OPTIONAL
SECOND FLOOR BONUS



FIRST FLOOR



OPTIONAL
SUPER SHOWER
AT OWNER'S BATH

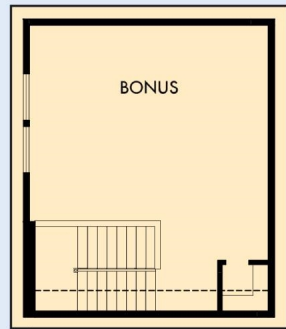
5889 in 4216 IND

For additional options, please visit DavidWeekleyHomes.com

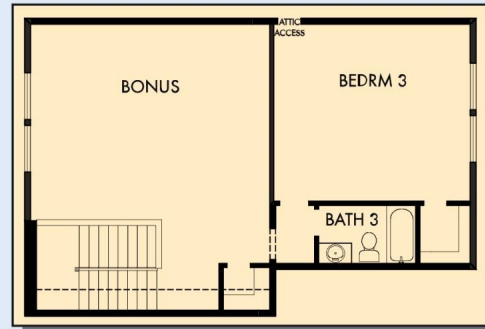
11/6/2019

DavidWeekleyHomes.com

THE GAMMILL



OPTIONAL BONUS



OPTIONAL BONUS WITH BEDROOM 3 AND BATH 3

For additional options, please visit DavidWeekleyHomes.com

DavidWeekleyHomes.com

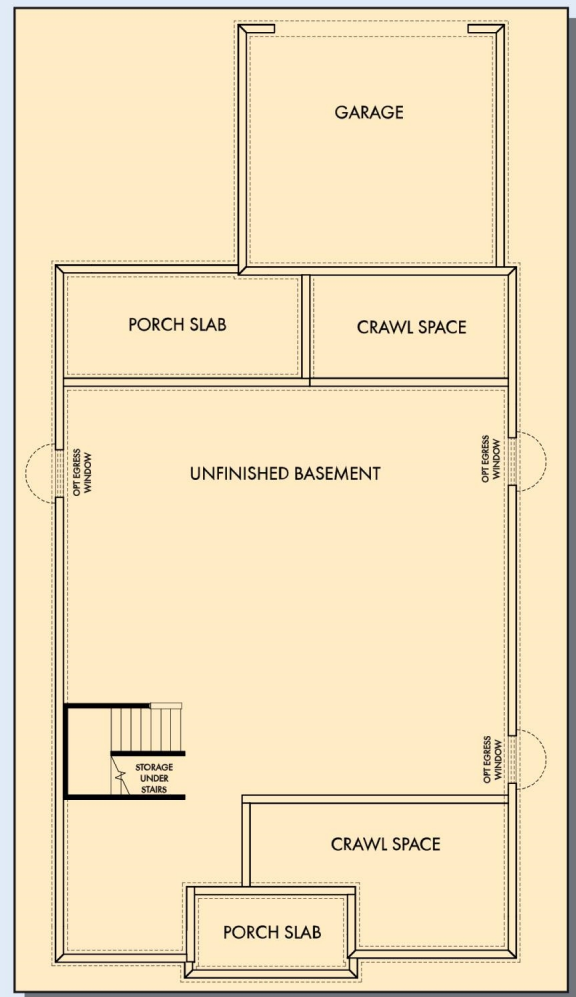
THE GAMMILL



OPTIONAL BEDROOM 4,5 AND BATH 4 WITH GAME ROOM



OPTIONAL GAME ROOM WITH BATH 4



OPTIONAL UNFINISHED BASEMENT

For additional options, please visit DavidWeekleyHomes.com



See a David Weekley Homes Sales Consultant for details. Prices, plans, dimensions, features, specifications, materials, and availability of homes or communities are subject to change without notice or obligation. Illustrations are artist's depictions only and may differ from completed improvements. Copyright © 2019 David Weekley Homes - All Rights Reserved. Indianapolis, IN

DavidWeekleyHomes.com